

MEI1 Antibody



PACO36334

Product Information

Size:

50ug

Reactivity:

Human

Source:

Rabbit

Isotype:

IgG

Applications:

ELISA, IHC

Recommended dilutions:

ELISA:1:2000-1:10000, IHC:1:20-1:200

Protein Background:

Required for normal meiotic chromosome synapsis. May be involved in the formation of meiotic double-strand breaks (DSBs) in spermatocytes.

Gene ID:

MEI1

Uniprot

Q5TIA1

Synonyms:

Meiosis inhibitor protein 1 (Meiosis defective protein 1), MEI1

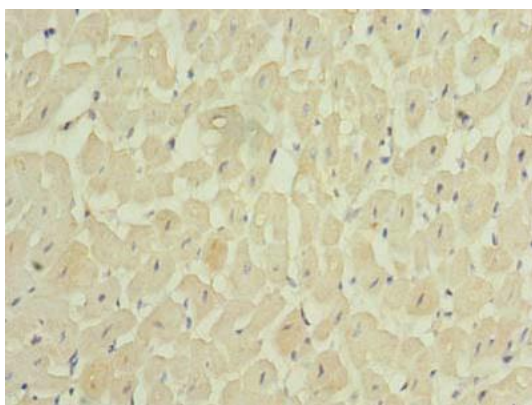
Immunogen:

Recombinant Human Meiosis inhibitor protein 1 protein (1-238AA).

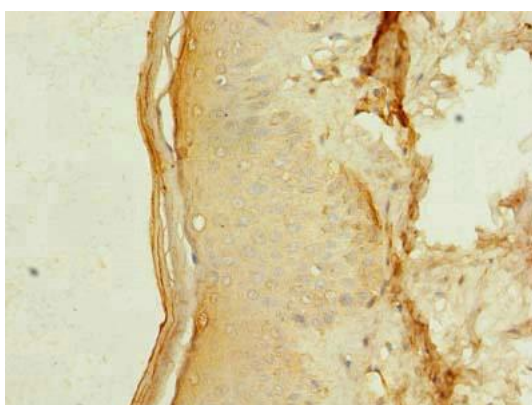
Storage:

Preservative: 0.03% Proclin 300. Constituents: 50% Glycerol, 0.01M PBS, PH 7.4

Product Images



Immunohistochemistry of paraffin-embedded human heart tissue using PACO36334 at dilution of 1:100.



Immunohistochemistry of paraffin-embedded human skin tissue using PACO36334 at dilution of 1:100.