

C2orf83 Antibody



PACO36290

Product Information

Size:

50ug

Reactivity:

Human

Source:

Rabbit

Isotype:

IgG

Applications:

ELISA, IHC

Recommended dilutions:

ELISA:1:2000-1:10000, IHC:1:20-1:200

Protein Background:

integral component of plasma membrane, thiamine uptake transmembrane transporter activity, drug transmembrane transport, thiamine transmembrane transport, thiamine-containing compound metabolic process.

Gene ID:

C2orf83

Uniprot

Q53S99

Synonyms:

Folate transporter-like protein C2orf83, C2orf83

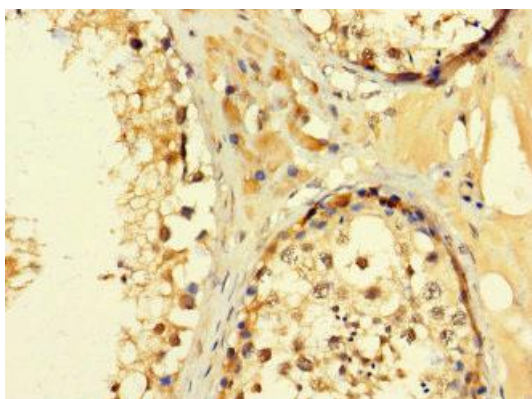
Immunogen:

Recombinant Human Folate transporter-like protein C2orf83 protein (29-150AA).

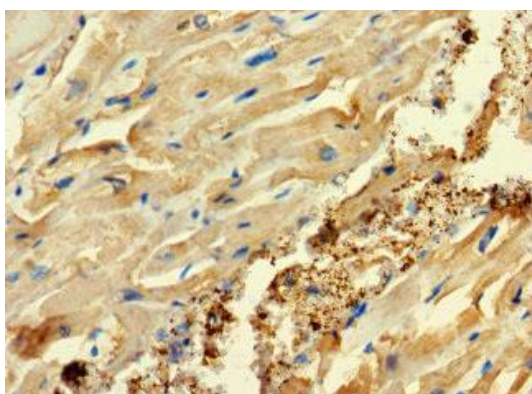
Storage:

Preservative: 0.03% Proclin 300. Constituents: 50% Glycerol, 0.01M PBS, PH 7.4

Product Images



Immunohistochemistry of paraffin-embedded human testis tissue using PACO36290 at dilution of 1:100.



Immunohistochemistry of paraffin-embedded human heart tissue using PACO36290 at dilution of 1:100.