

KHDC1 Antibody



PACO36282

Product Information

Size:

50ug

Reactivity:

Human, Mouse

Source:

Rabbit

Isotype:

IgG

Applications:

ELISA, WB, IHC, IF

Recommended dilutions:

ELISA:1:2000-1:10000, WB:1:500-1:2000,
IHC:1:20-1:200, IF:1:50-1:200

Protein Background:**Gene ID:**

KHDC1

Uniprot

Q4VXA5

Synonyms:

KH homology domain-containing protein 1, KHDC1, C6orf147 C6orf148

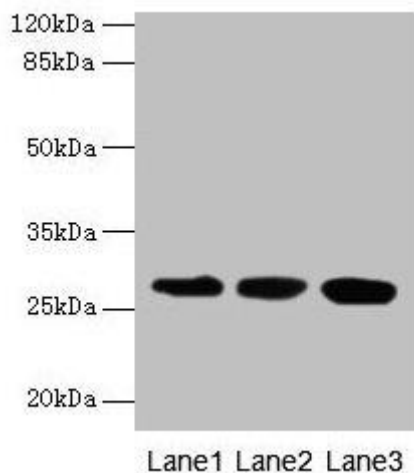
Immunogen:

Recombinant Human KH homology domain-containing protein 1 protein (74-237AA).

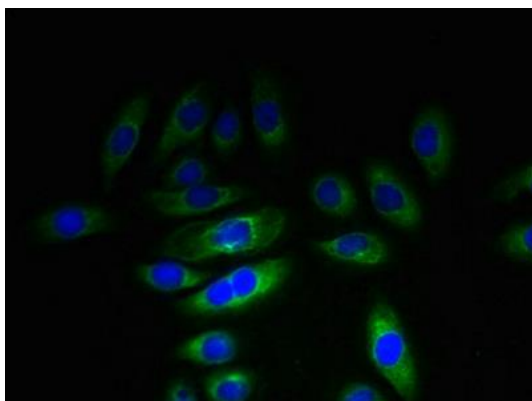
Storage:

Preservative: 0.03% Proclin 300. Constituents: 50% Glycerol, 0.01M PBS, PH 7.4

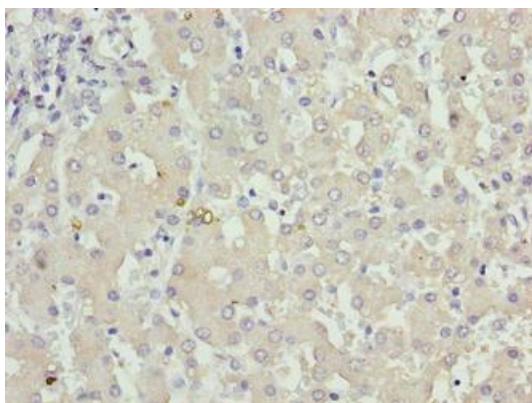
Product Images



Western blot. All lanes: KHDC1 antibody at 5 μ g/ml. Lane 1: Mouse liver tissue. Lane 2: Mouse kidney tissue. Lane 3: Mouse gonadal tissue. Secondary. Goat polyclonal to rabbit IgG at 1/10000 dilution. Predicted band size: 28, 19 kDa. Observed band size: 28 kDa.



Immunofluorescent analysis of A549 cells using PACO36282 at dilution of 1:100 and Alexa Fluor 488-conjugated AffiniPure Goat Anti-Rabbit IgG(H+L).



Immunohistochemistry of paraffin-embedded human liver tissue using PACO36282 at dilution of 1:100.