

TMEM255A Antibody

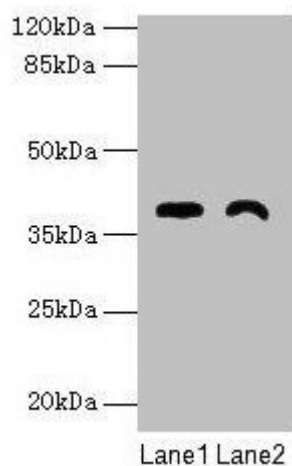


PACO36274

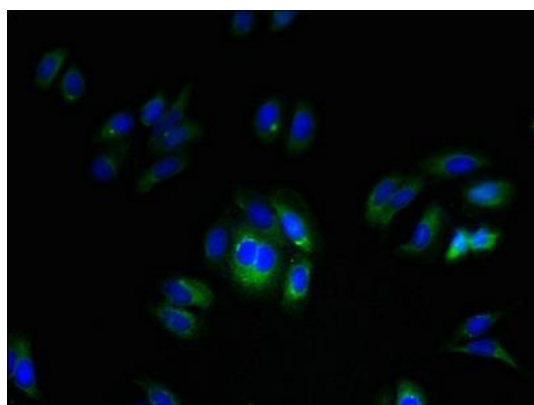
Product Information

Size: 50ug	Protein Background:
Reactivity: Human, Mouse	Gene ID: TMEM255A
Source: Rabbit	Uniprot Q5JRV8
Isotype: IgG	Synonyms: Transmembrane protein 255A (Protein FAM70A), TMEM255A, FAM70A
Applications: ELISA, WB, IF	Immunogen: Recombinant Human Transmembrane protein 255A protein (110-225AA).
Recommended dilutions: ELISA:1:2000-1:10000, WB:1:1000-1:5000, IF:1:50-1:200	Storage: Preservative: 0.03% Proclin 300. Constituents: 50% Glycerol, 0.01M PBS, PH 7.4

Product Images



Western blot. All lanes: TMEM255A antibody at 6 μ g/ml. Lane 1: Mouse stomach tissue. Lane 2: Mouse heart tissue. Secondary. Goat polyclonal to rabbit IgG at 1/10000 dilution. Predicted band size: 39, 21, 36, 27 kDa. Observed band size: 39 kDa.



Immunofluorescent analysis of HepG2 cells using PACO36274 at dilution of 1:100 and Alexa Fluor 488-conjugated AffiniPure Goat Anti-Rabbit IgG(H+L).