

PACO36238

Product Information

Size:

50ug

Reactivity:

Human

Source:

Rabbit

Isotype:

IgG

Applications:

ELISA, IHC

Recommended dilutions:

ELISA:1:2000-1:10000, IHC:1:20-1:200

Protein Background:

Acts as a specific nuclear import carrier for HSP70 proteins following heat-shock stress: acts by mediating the nucleoporin-dependent translocation of ATP-bound HSP70 proteins into the nucleus. HSP70 proteins import is required to protect cells from heat shock damages. Does not translocate ADP-bound HSP70 proteins into the nucleus.

Gene ID:

HIKESHI

Uniprot

Q53FT3

Synonyms:

Protein Hikeshi, HIKESHI, C11orf73

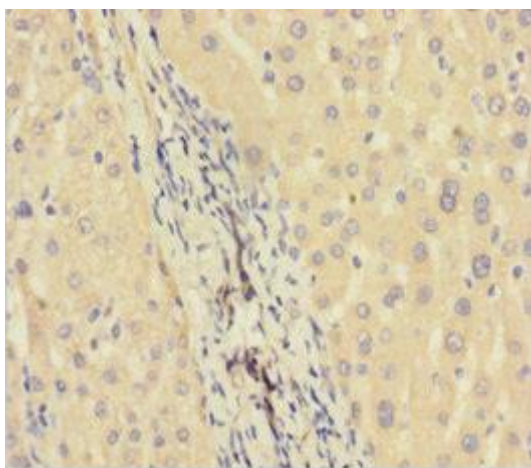
Immunogen:

Recombinant Human Protein Hikeshi protein (1-197AA).

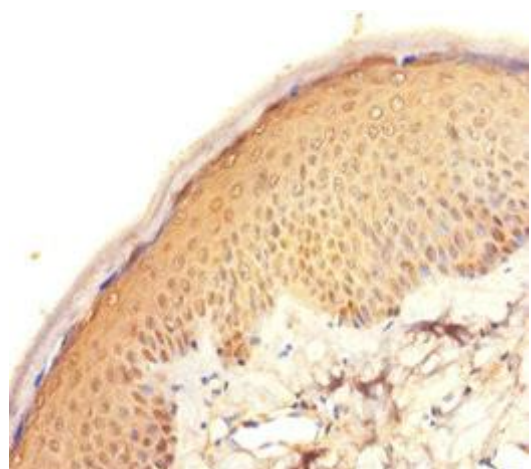
Storage:

Preservative: 0.03% Proclin 300. Constituents: 50% Glycerol, 0.01M PBS, PH 7.4

Product Images



Immunohistochemistry of paraffin-embedded human liver cancer using PACO36238 at dilution of 1:100.



Immunohistochemistry of paraffin-embedded human skin tissue using PACO36238 at dilution of 1:100.