

# ORMDL2 Antibody



PACO36194

---

## Product Information

**Size:**

50ug

**Reactivity:**

Human

**Source:**

Rabbit

**Isotype:**

IgG

**Applications:**

ELISA, IHC, IF

**Recommended dilutions:**

ELISA:1:2000-1:10000, IHC:1:20-1:200,  
IF:1:50-1:200

**Protein Background:**

Negative regulator of sphingolipid synthesis.

**Gene ID:**

ORMDL2

**Uniprot**

Q53FV1

**Synonyms:**

ORM1-like protein 2 (Adoplin-2), ORMDL2

**Immunogen:**

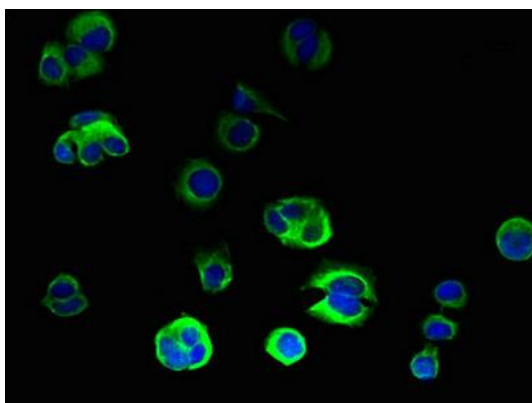
Recombinant Human ORM1-like protein 2 protein (64-153AA).

**Storage:**

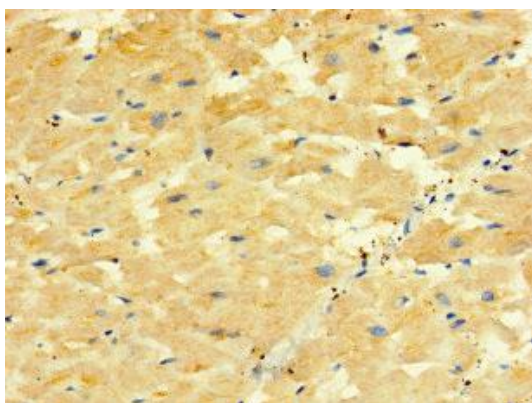
Preservative: 0.03% Proclin 300. Constituents: 50% Glycerol, 0.01M PBS, PH 7.4

## Product Images

---



Immunofluorescent analysis of MCF-7 cells using PACO36194 at dilution of 1:100 and Alexa Fluor 488-conjugated AffiniPure Goat Anti-Rabbit IgG(H+L).



Immunohistochemistry of paraffin-embedded human heart tissue using PACO36194 at dilution of 1:100.