

# SYTL3 Antibody



PACO36146

---

## Product Information

**Size:**

50ug

**Reactivity:**

Human

**Source:**

Rabbit

**Isotype:**

IgG

**Applications:**

ELISA, WB, IHC

**Recommended dilutions:**

ELISA:1:2000-1:10000, WB:1:1000-1:5000,  
IHC:1:20-1:200

**Protein Background:**

May act as Rab effector protein and play a role in vesicle trafficking. Binds phospholipids in the presence of calcium ions.

**Gene ID:**

SYTL3

**Uniprot**

Q4VX76

**Synonyms:**

Synaptotagmin-like protein 3 (Exophilin-6), SYTL3, SLP3

**Immunogen:**

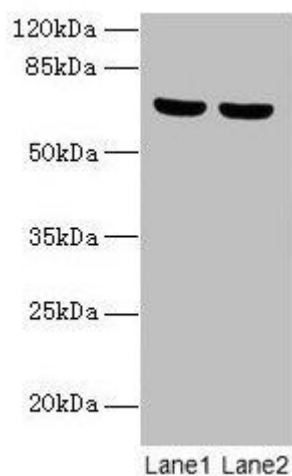
Recombinant Human Synaptotagmin-like protein 3 protein (1-300AA).

**Storage:**

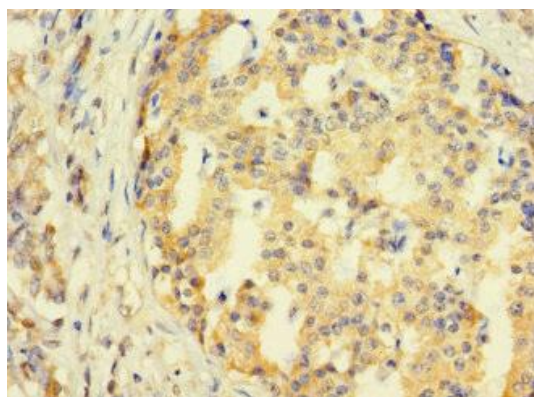
Preservative: 0.03% Proclin 300. Constituents: 50% Glycerol, 0.01M PBS, PH 7.4

## Product Images

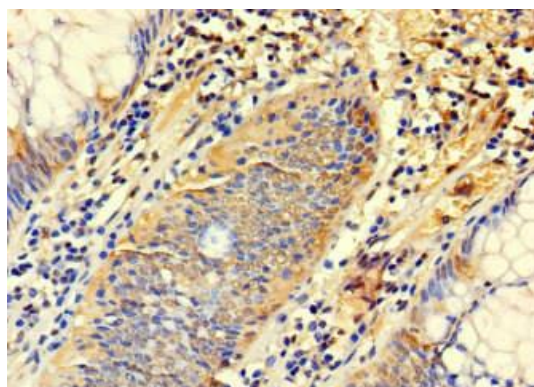
---



Western blot. All lanes: SYTL3 antibody at 5 $\mu$ g/ml. Lane 1: A549 whole cell lysate. Lane 2: THP-1 whole cell lysate. Secondary. Goat polyclonal to rabbit IgG at 1/10000 dilution. Predicted band size: 69, 61 kDa. Observed band size: 69 kDa.



Immunohistochemistry of paraffin-embedded human pancreatic cancer using PACO36146 at dilution of 1:100.



Immunohistochemistry of paraffin-embedded human colon cancer using PACO36146 at dilution of 1:100.