

MRPL51 Antibody



PACO36142

Product Information

Size:

50ug

Reactivity:

Human

Source:

Rabbit

Isotype:

IgG

Applications:

ELISA, WB, IHC

Recommended dilutions:

ELISA:1:2000-1:10000, WB:1:500-1:2000,
IHC:1:20-1:200

Protein Background:

mitochondrial inner membrane, mitochondrial large ribosomal subunit, mitochondrial ribosome, structural constituent of ribosome, mitochondrial translation, mitochondrial translational elongation, mitochondrial translational initiation, mitochondrial translational termination, organelle organization, translation.

Gene ID:

MRPL51

Uniprot

Q4U2R6

Synonyms:

39S ribosomal protein L51, mitochondrial (L51mt) (MRP-L51) (Mitochondrial large ribosomal subunit protein mL51) (bMRP-64) (bMRP64), MRPL51, MRP64

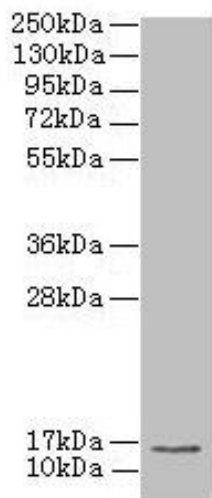
Immunogen:

Recombinant Human 39S ribosomal protein L51, mitochondrial protein (32-128AA).

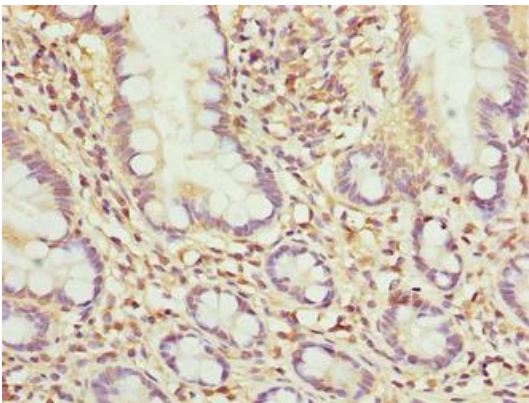
Storage:

Preservative: 0.03% Proclin 300. Constituents: 50% Glycerol, 0.01M PBS, PH 7.4

Product Images



Western blot. All lanes: MRPL51 antibody at 2.5 μ g/ml + K562 whole cell lysate. Secondary. Goat polyclonal to rabbit IgG at 1/10000 dilution. Predicted band size: 16 kDa. Observed band size: 16 kDa.



Immunohistochemistry of paraffin-embedded human small intestine tissue using PACO36142 at dilution of 1:100.