

## Product Information

**Size:**

50ug

**Reactivity:**

Human

**Source:**

Rabbit

**Isotype:**

IgG

**Applications:**

ELISA, WB, IHC

**Recommended dilutions:**

ELISA:1:2000-1:10000, WB:1:500-1:2000,  
IHC:1:20-1:200

**Protein Background:**

Mediates activation of long-chain fatty acid, for both synthesis of cellular lipids, and degradation via beta-oxidation. Able to activate long-chain fatty acid, . Also able to activate very long-chain fatty acid, ; however, the relevance of such activity is unclear in vivo. Has increased ability to activate oleic and linoleic acid, May play a role in spermatogenesis.

**Gene ID:**

ACSBG2

**Uniprot**

Q5FVE4

**Synonyms:**

Long-chain-fatty-acid, -CoA ligase ACSBG2 (EC 6.2.1.3) (Acyl-CoA synthetase bubblegum family member 2) (Bubblegum-related protein) (PRTD-NY3), ACSBG2, BGR

**Immunogen:**

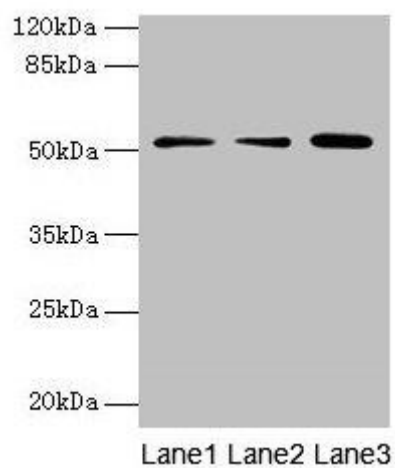
Recombinant Human Long-chain-fatty-acid, -CoA ligase ACSBG2 protein (301-600AA).

**Storage:**

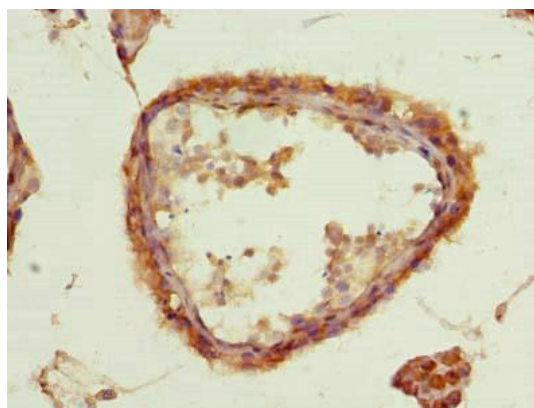
Preservative: 0.03% Proclin 300. Constituents: 50% Glycerol, 0.01M PBS, PH 7.4

## Product Images

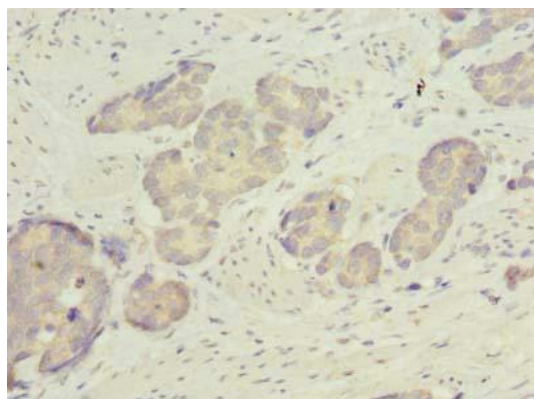
---



Western blot. All lanes: ACSBG2 antibody at 4 $\mu$ g/ml. Lane 1: A431 whole cell lysate. Lane 2: K562 whole cell lysate. Lane 3: A549 whole cell lysate. Secondary. Goat polyclonal to rabbit IgG at 1/10000 dilution. Predicted band size: 75, 69, 54, 52 kDa. Observed band size: 52 kDa.



Immunohistochemistry of paraffin-embedded human testis tissue using PACO36122 at dilution of 1:100.



Immunohistochemistry of paraffin-embedded human gastric cancer using PACO36122 at dilution of 1:100.