

Product Information

Size:

50ug

Reactivity:

Human

Source:

Rabbit

Isotype:

IgG

Applications:

ELISA, IHC

Recommended dilutions:

ELISA:1:2000-1:10000, IHC:1:20-1:200

Protein Background:

Acts as a component of endosomal retrieval machinery that is involved in protein transport from early endosomes to either recycling endosomes or the trans-Golgi network. Mediates the recruitment of Golgi-associated retrograde protein (GARP) complex to the trans-Golgi network and controls early endosome-to-Golgi transport of internalized protein. Promotes the recycling of internalized transferrin receptor (TFRC) to the plasma membrane through interaction with endosome-associated recycling protein (EARP) complex.

Gene ID:

EIPR1

Uniprot

Q53HC9

Synonyms:

EARP and GARP complex-interacting protein 1 (Endosome-associated recycling protein-interacting protein) (Golgi-associated retrograde protein-interacting protein) (Tumor-suppressing STF cDNA 1 protein) (Tumor-suppressing subchromosomal transferable fragment candidate gene 1 protein), EIPR1, TSSC1

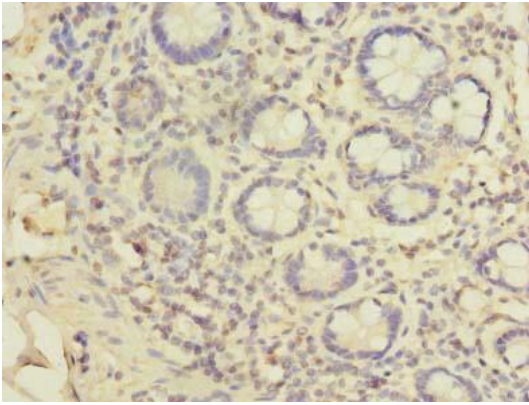
Immunogen:

Recombinant Human EARP and GARP complex-interacting protein 1 protein (201-387AA).

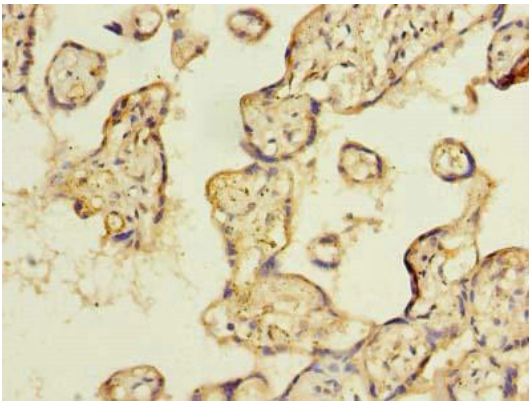
Storage:

Preservative: 0.03% Proclin 300. Constituents: 50% Glycerol, 0.01M PBS, PH 7.4

Product Images



Immunohistochemistry of paraffin-embedded human small intestine tissue using PACO36094 at dilution of 1:100.



Immunohistochemistry of paraffin-embedded human placenta tissue using PACO36094 at dilution of 1:100.