

SPATS1 Antibody



PACO36046

Product Information

Size:

50ug

Reactivity:

Human

Source:

Rabbit

Isotype:

IgG

Applications:

ELISA, IHC

Recommended dilutions:

ELISA:1:2000-1:10000, IHC:1:20-1:200

Protein Background:

Gene ID:

SPATS1

Uniprot

Q496A3

Synonyms:

Spermatogenesis-associated serine-rich protein 1, SPATS1

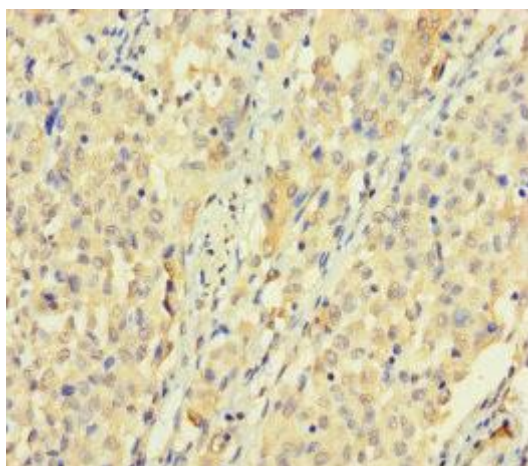
Immunogen:

Recombinant Human Spermatogenesis-associated serine-rich protein 1 protein (1-300AA).

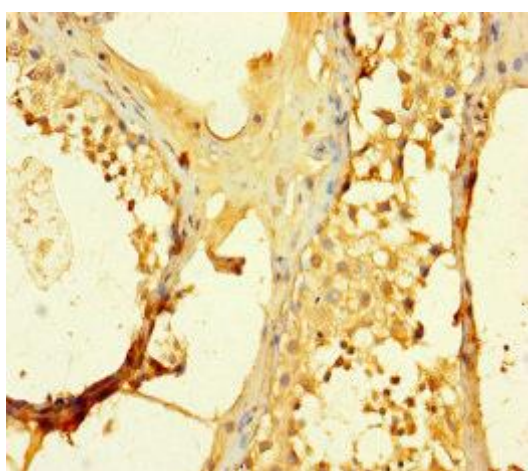
Storage:

Preservative: 0.03% Proclin 300. Constituents: 50% Glycerol, 0.01M PBS, PH 7.4

Product Images



Immunohistochemistry of paraffin-embedded human lung cancer using PACO36046 at dilution of 1:100.



Immunohistochemistry of paraffin-embedded human testis tissue using PACO36046 at dilution of 1:100.