

SLC36A2 Antibody



PACO36014

Product Information

Size:

50ug

Reactivity:

Human

Source:

Rabbit

Isotype:

IgG

Applications:

ELISA, IHC, IF

Recommended dilutions:

ELISA:1:2000-1:10000, IHC:1:20-1:200,
IF:1:50-1:200

Protein Background:

Involved in a pH-dependent electrogenic neuronal transport and sequestration of small amino acid, . Transports glycine and proline. Inhibited by sarcosine.

Gene ID:

SLC36A2

Uniprot

Q495M3

Synonyms:

Proton-coupled amino acid, transporter 2 (Proton/amino acid, transporter 2) (Solute carrier family 36 member 2) (Tramdorin-1), SLC36A2, PAT2 TRAMD1

Immunogen:

Recombinant Human Proton-coupled amino acid, transporter 2 protein (1-58AA).

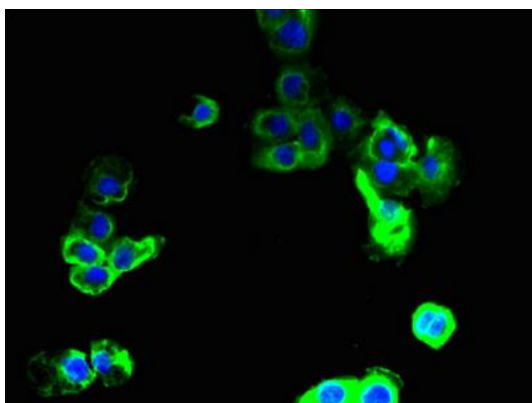
Storage:

Preservative: 0.03% Proclin 300. Constituents: 50% Glycerol, 0.01M PBS, PH 7.4

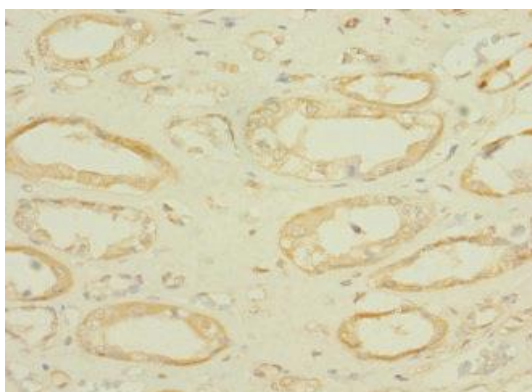
Product Images



Immunohistochemistry of paraffin-embedded human skeletal muscle tissue using PACO36014 at dilution of 1:100.



Immunofluorescent analysis of A431 cells using PACO36014 at dilution of 1:100 and Alexa Fluor 488-conjugated AffiniPure Goat Anti-Rabbit IgG(H+L).



Immunohistochemistry of paraffin-embedded human kidney tissue using PACO36014 at dilution of 1:100.