

CFAP100 Antibody



PACO35998

Product Information

Size:

50ug

Reactivity:

Human

Source:

Rabbit

Isotype:

IgG

Applications:

ELISA, IHC, IF

Recommended dilutions:

ELISA:1:2000-1:10000, IHC:1:20-1:200,
IF:1:50-1:200

Protein Background:

May play a role in ciliary/flagellar motility by regulating the assembly and the activity of axonemal inner dynein arm.

Gene ID:

CFAP100

Uniprot

Q494V2

Synonyms:

Cilia- and flagella-associated protein 100 (Coiled-coil domain-containing protein 37), CFAP100, CCDC37

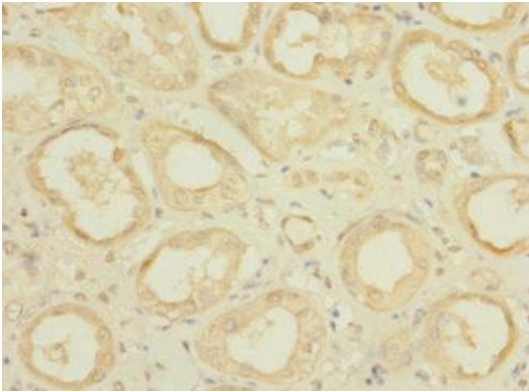
Immunogen:

Recombinant Human Cilia- and flagella-associated protein 100 protein (1-300AA).

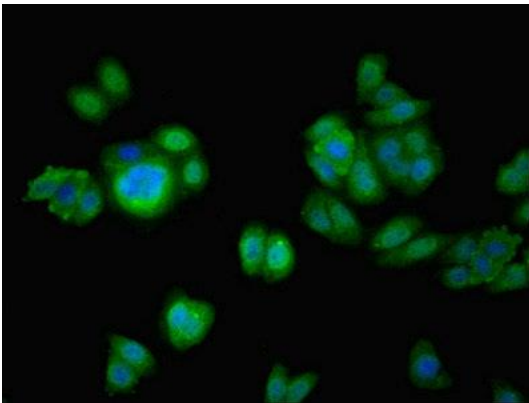
Storage:

Preservative: 0.03% Proclin 300. Constituents: 50% Glycerol, 0.01M PBS, PH 7.4

Product Images



Immunohistochemistry of paraffin-embedded human kidney tissue using PACO35998 at dilution of 1:100.



Immunofluorescent analysis of HepG2 cells using PACO35998 at dilution of 1:100 and Alexa Fluor 488-conjugated AffiniPure Goat Anti-Rabbit IgG(H+L).