

C3orf36 Antibody



PACO35954

Product Information

Size:

50ug

Reactivity:

Human

Source:

Rabbit

Isotype:

IgG

Applications:

ELISA, IHC

Recommended dilutions:

ELISA:1:2000-1:10000, IHC:1:20-1:200

Protein Background:

Gene ID:

C3orf36

Uniprot

Q3SXR2

Synonyms:

Uncharacterized protein C3orf36, C3orf36

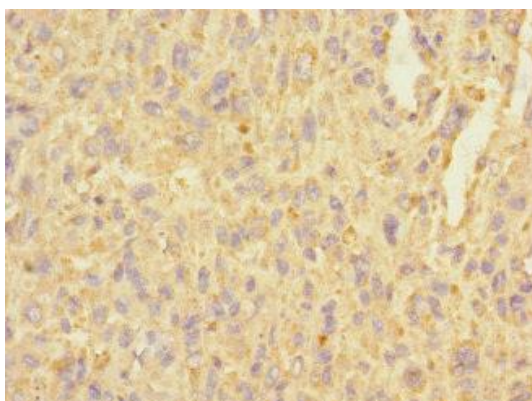
Immunogen:

Recombinant Human Uncharacterized protein C3orf36 protein (1-165AA).

Storage:

Preservative: 0.03% Proclin 300. Constituents: 50% Glycerol, 0.01M PBS, PH 7.4

Product Images



Immunohistochemistry of paraffin-embedded human melanoma using PACO35954 at dilution of 1:100.