

# GRAMD1B Antibody



PACO35950

---

## Product Information

**Size:**

50ug

**Reactivity:**

Human

**Source:**

Rabbit

**Isotype:**

IgG

**Applications:**

ELISA, IHC, IF

**Recommended dilutions:**

ELISA:1:2000-1:10000, IHC:1:20-1:200,  
IF:1:50-1:200

**Protein Background:**

**Gene ID:**

GRAMD1B

**Uniprot**

Q3KR37

**Synonyms:**

GRAM domain-containing protein 1B, GRAMD1B, KIAA1201

**Immunogen:**

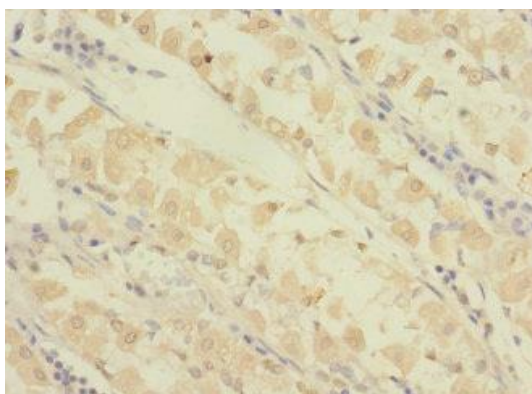
Recombinant Human GRAM domain-containing protein 1B protein (235-504AA).

**Storage:**

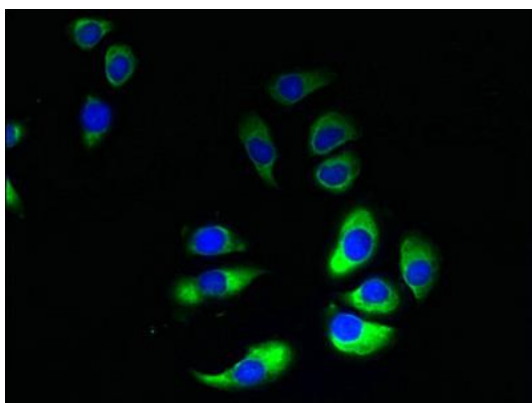
Preservative: 0.03% Proclin 300. Constituents: 50% Glycerol, 0.01M PBS, PH 7.4

## Product Images

---



Immunohistochemistry of paraffin-embedded human gastric cancer using PACO35950 at dilution of 1:100.



Immunofluorescent analysis of A549 cells using PACO35950 at dilution of 1:100 and Alexa Fluor 488-conjugated AffiniPure Goat Anti-Rabbit IgG(H+L).