

FAM161A Antibody



PACO35946

Product Information

Size:

50ug

Reactivity:

Human, Mouse

Source:

Rabbit

Isotype:

IgG

Applications:

ELISA, WB, IHC

Recommended dilutions:

ELISA:1:2000-1:10000, WB:1:1000-1:5000,
IHC:1:20-1:200

Protein Background:

Involved in ciliogenesis.

Gene ID:

FAM161A

Uniprot

Q3B820

Synonyms:

Protein FAM161A, FAM161A

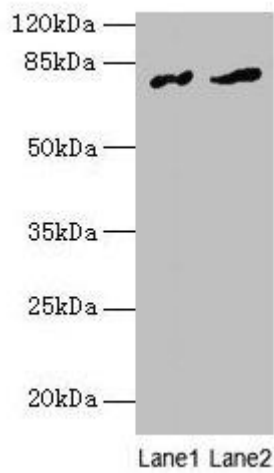
Immunogen:

Recombinant Human Protein FAM161A protein (1-300AA).

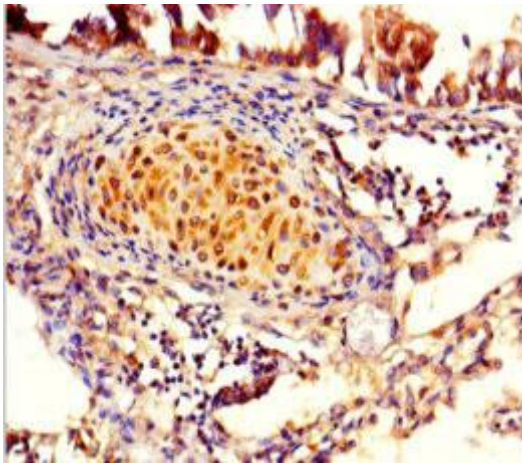
Storage:

Preservative: 0.03% Proclin 300. Constituents: 50% Glycerol, 0.01M PBS, PH 7.4

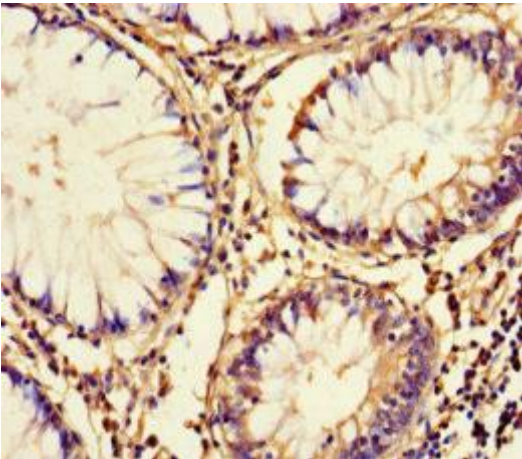
Product Images



Western blot. All lanes: FAM161A antibody at 8 μ g/ml. Lane 1: Human placenta tissue. Lane 2: Mouse liver tissue. Secondary. Goat polyclonal to rabbit IgG at 1/10000 dilution. Predicted band size: 77, 65, 84 kDa. Observed band size: 77 kDa.



Immunohistochemistry of paraffin-embedded human lung tissue using PACO35946 at dilution of 1:100.



Immunohistochemistry of paraffin-embedded human colon cancer using PACO35946 at dilution of 1:100.