

Product Information

Size:

50ug

Reactivity:

Human

Source:

Rabbit

Isotype:

IgG

Applications:

ELISA, IHC

Recommended dilutions:

ELISA:1:2000-1:10000, IHC:1:20-1:200

Protein Background:

Meiosis-specific telomere-associated protein involved in meiotic telomere attachment to the nucleus inner membrane, a crucial step for homologous pairing and synapsis. Component of the MAJIN-TERB1-TERB2 complex, which promotes telomere cap exchange by mediating attachment of telomeric DNA to the inner nuclear membrane and replacement of the protective cap of telomeric chromosomes: in early meiosis, the MAJIN-TERB1-TERB2 complex associates with telomeric DNA and the shelterin/telosome complex. During prophase, the complex matures and promotes release of the shelterin/telosome complex from telomeric DNA. In the complex, MAJIN acts as the anchoring subunit to the nucleus inner membrane. MAJIN shows DNA-binding activity, possibly for the stabilization of telomere attachment on the nucleus inner membrane.

Gene ID:

MAJIN

Uniprot

Q3KP22

Synonyms:

Membrane-anchored junction protein, MAJIN, C11orf85

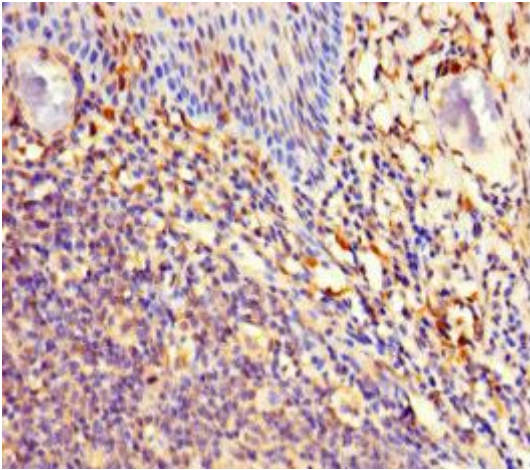
Immunogen:

Recombinant Human Membrane-anchored junction protein (1-216AA).

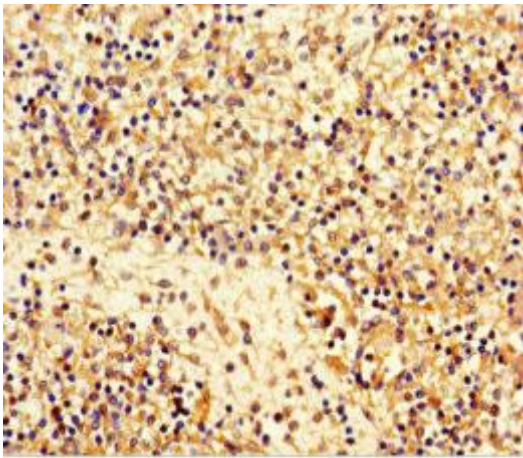
Storage:

Preservative: 0.03% Proclin 300. Constituents: 50% Glycerol, 0.01M PBS, PH 7.4

Product Images



Immunohistochemistry of paraffin-embedded human tonsil tissue using PACO35910 at dilution of 1:100.



Immunohistochemistry of paraffin-embedded human spleen tissue using PACO35910 at dilution of 1:100.