

# KLHL38 Antibody



PACO35878

---

## Product Information

**Size:**

50ug

**Reactivity:**

Human

**Source:**

Rabbit

**Isotype:**

IgG

**Applications:**

ELISA, IHC

**Recommended dilutions:**

ELISA:1:2000-1:10000, IHC:1:20-1:200

**Protein Background:**

Cul3-RING ubiquitin ligase complex, protein ubiquitination.

**Gene ID:**

KLHL38

**Uniprot**

Q2WGI6

**Synonyms:**

Kelch-like protein 38, KLHL38, C8orfK36

**Immunogen:**

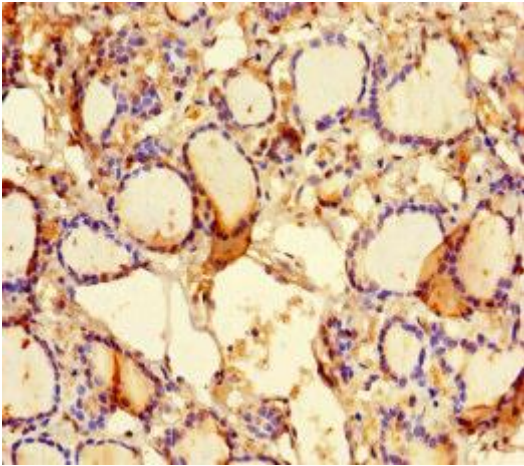
Recombinant Human Kelch-like protein 38 protein (1-200AA).

**Storage:**

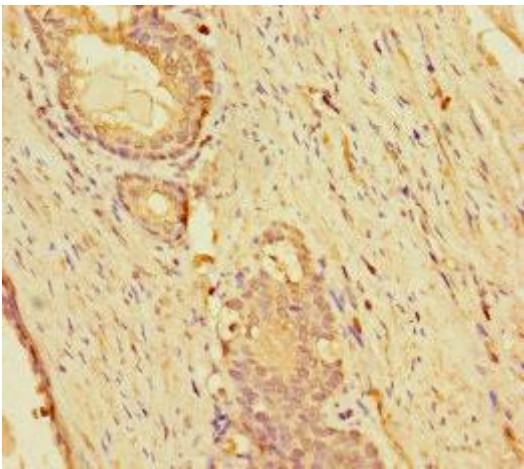
Preservative: 0.03% Proclin 300. Constituents: 50% Glycerol, 0.01M PBS, PH 7.4

## Product Images

---



Immunohistochemistry of paraffin-embedded human thyroid tissue using PACO35878 at dilution of 1:100.



Immunohistochemistry of paraffin-embedded human prostate cancer using PACO35878 at dilution of 1:100.