

PACO35818

---

## Product Information

**Size:**

50ug

**Reactivity:**

Human

**Source:**

Rabbit

**Isotype:**

IgG

**Applications:**

ELISA, IHC

**Recommended dilutions:**

ELISA:1:2000-1:10000, IHC:1:20-1:200

**Protein Background:**

nucleus.

**Gene ID:**

ESRG

**Uniprot**

Q1W209

**Synonyms:**

Embryonic stem cell-related gene protein (hES cell-related gene protein), ESRG, HESRG

**Immunogen:**

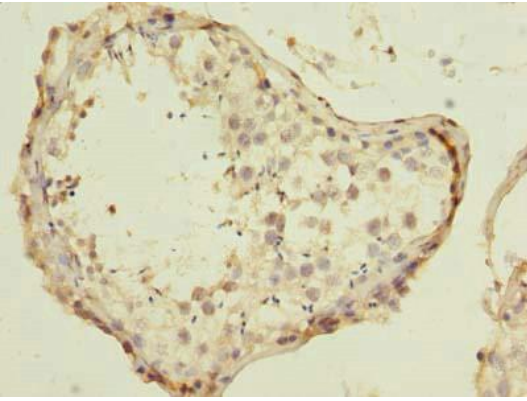
Recombinant Human Embryonic stem cell-related gene protein (1-222AA).

**Storage:**

Preservative: 0.03% Proclin 300. Constituents: 50% Glycerol, 0.01M PBS, PH 7.4

## Product Images

---



Immunohistochemistry of paraffin-embedded human testis tissue using PACO35818 at dilution of 1:100.