

KCTD19 Antibody



PACO35814

Product Information

Size:

50ug

Reactivity:

Human

Source:

Rabbit

Isotype:

IgG

Applications:

ELISA, IHC

Recommended dilutions:

ELISA:1:2000-1:10000, IHC:1:20-1:200

Protein Background:**Gene ID:**

KCTD19

Uniprot

Q17RG1

Synonyms:

BTB/POZ domain-containing protein KCTD19, KCTD19

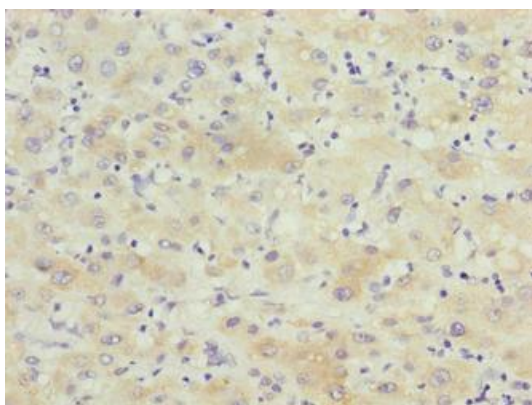
Immunogen:

Recombinant Human BTB/POZ domain-containing protein KCTD19 protein (490-751AA).

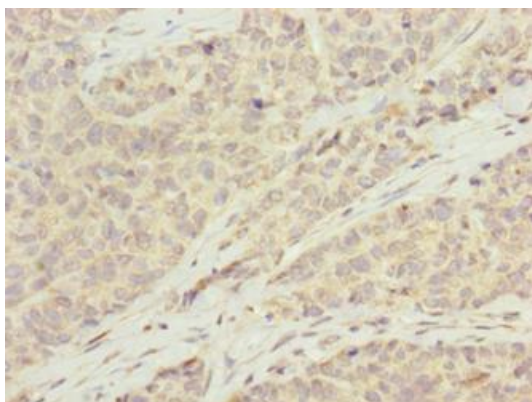
Storage:

Preservative: 0.03% Proclin 300. Constituents: 50% Glycerol, 0.01M PBS, PH 7.4

Product Images



Immunohistochemistry of paraffin-embedded human liver cancer using PACO35814 at dilution of 1:100.



Immunohistochemistry of paraffin-embedded human ovarian cancer using PACO35814 at dilution of 1:100.