

# SMCO1 Antibody



PACO35774

---

## Product Information

**Size:**

50ug

**Reactivity:**

Human

**Source:**

Rabbit

**Isotype:**

IgG

**Applications:**

ELISA, IHC

**Recommended dilutions:**

ELISA:1:2000-1:10000, IHC:1:20-1:200

**Protein Background:**

**Gene ID:**

SMCO1

**Uniprot**

Q147U7

**Synonyms:**

Single-pass membrane and coiled-coil domain-containing protein 1 (Single-pass membrane protein with coiled-coil domains 1), SMCO1, C3orf43

**Immunogen:**

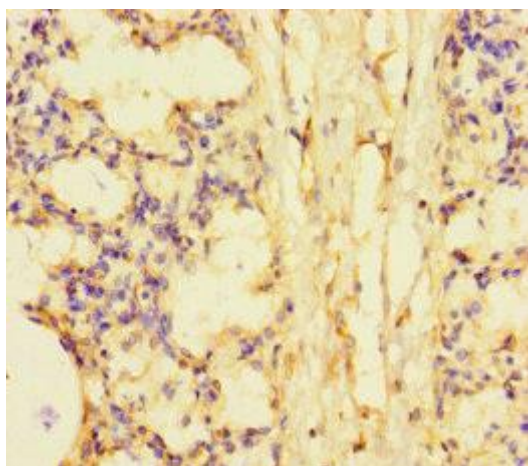
Recombinant Human Single-pass membrane and coiled-coil domain-containing protein 1 protein (82-214AA).

**Storage:**

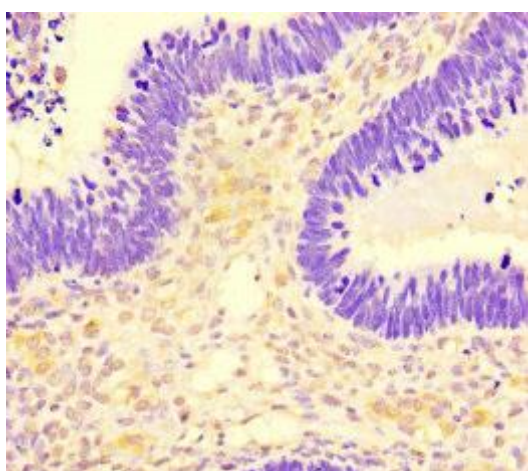
Preservative: 0.03% Proclin 300. Constituents: 50% Glycerol, 0.01M PBS, PH 7.4

## Product Images

---



Immunohistochemistry of paraffin-embedded human lung tissue using PACO35774 at dilution of 1:100.



Immunohistochemistry of paraffin-embedded human ovarian cancer using PACO35774 at dilution of 1:100.