

# E2F2 Antibody



PACO35766

---

## Product Information

**Size:**

50ug

**Reactivity:**

Human

**Source:**

Rabbit

**Isotype:**

IgG

**Applications:**

ELISA, WB, IHC

**Recommended dilutions:**

ELISA:1:2000-1:10000, WB:1:500-1:2000,  
IHC:1:20-1:200

**Protein Background:**

Transcription activator that binds DNA cooperatively with DP proteins through the E2 recognition site, 5'-TTTC[CG]CGC-3' found in the promoter region of a number of genes whose products are involved in cell cycle regulation or in DNA replication. The DRTF1/E2F complex functions in the control of cell-cycle progression from G1 to S phase. E2F2 binds specifically to RB1 in a cell-cycle dependent manner.

**Gene ID:**

E2F2

**Uniprot**

Q14209

**Synonyms:**

Transcription factor E2F2 (E2F-2), E2F2

**Immunogen:**

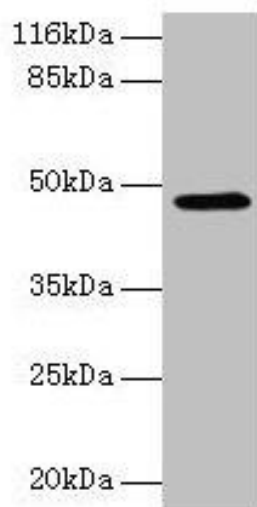
Recombinant Human Transcription factor E2F2 protein (1-83AA).

**Storage:**

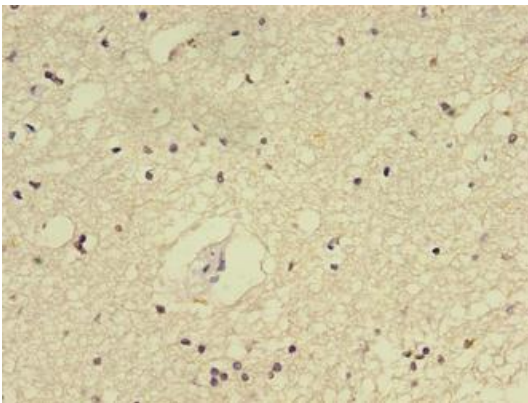
Preservative: 0.03% Proclin 300. Constituents: 50% Glycerol, 0.01M PBS, PH 7.4

## Product Images

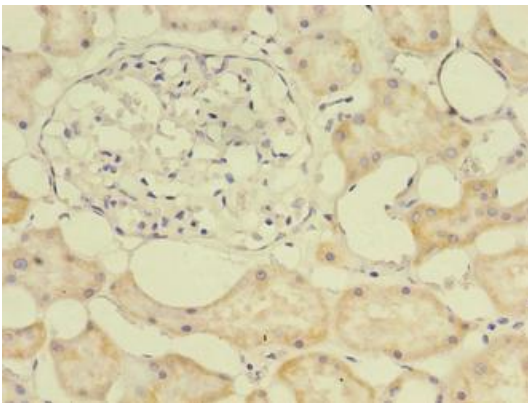
---



Western blot. All lanes: E2F2 antibody at 2 $\mu$ g/ml + 293T whole cell lysate. Secondary. Goat polyclonal to rabbit IgG at 1/10000 dilution. Predicted band size: 48 kDa. Observed band size: 48 kDa.



Immunohistochemistry of paraffin-embedded human brain tissue using PACO35766 at dilution of 1:100.



Immunohistochemistry of paraffin-embedded human kidney tissue using PACO35766 at dilution of 1:100.