

# MAB21L1 Antibody



PACO35754

---

## Product Information

**Size:**

50ug

**Reactivity:**

Human

**Source:**

Rabbit

**Isotype:**

IgG

**Applications:**

ELISA, WB, IHC

**Recommended dilutions:**

ELISA:1:2000-1:10000, WB:1:1000-1:5000,  
IHC:1:20-1:200

**Protein Background:**

Putative nucleotidyltransferase required for several aspects of embryonic development including normal development of the eye. It is unclear whether it displays nucleotidyltransferase activity in vivo. Binds single-stranded RNA (ssRNA).

**Gene ID:**

MAB21L1

**Uniprot**

Q13394

**Synonyms:**

Putative nucleotidyltransferase MAB21L1 (EC 2.7.7. -) (Protein mab-21-like 1), MAB21L1, CAGR1

**Immunogen:**

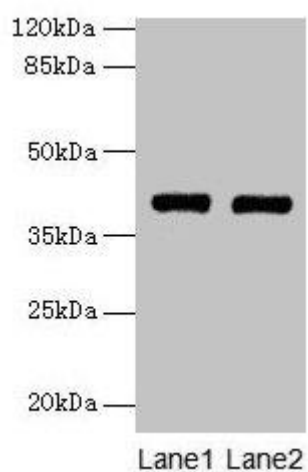
Recombinant Human Putative nucleotidyltransferase MAB21L1 protein (1-359AA).

**Storage:**

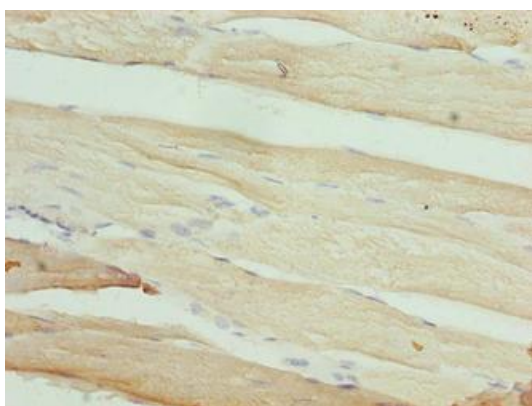
Preservative: 0.03% Proclin 300. Constituents: 50% Glycerol, 0.01M PBS, PH 7.4

## Product Images

---



Western blot. All lanes: MAB21L1 antibody at 6 $\mu$ g/ml. Lane 1: A375 whole cell lysate. Lane 2: CEM whole cell lysate. Secondary. Goat polyclonal to rabbit IgG at 1/10000 dilution. Predicted band size: 41 kDa. Observed band size: 41 kDa.



Immunohistochemistry of paraffin-embedded human skeletal muscle tissue using PACO35754 at dilution of 1:100.