

PLA2R1 Antibody



PACO35746

Product Information

Size:

50ug

Reactivity:

Human

Source:

Rabbit

Isotype:

IgG

Applications:

ELISA, IHC

Recommended dilutions:

ELISA:1:2000-1:10000, IHC:1:20-1:200

Protein Background:

Gene ID:

PLA2R1

Uniprot

Q13018

Synonyms:

Secretory phospholipase A2 receptor (PLA2-R) (PLA2R) (180 kDa secretory phospholipase A2 receptor) (C-type lectin domain family 13 member C) (M-type receptor) [Cleaved into: Soluble secretory phospholipase A2 receptor (Soluble PLA2-R) (Soluble PLA2R)], PLA2R1, CLEC13C

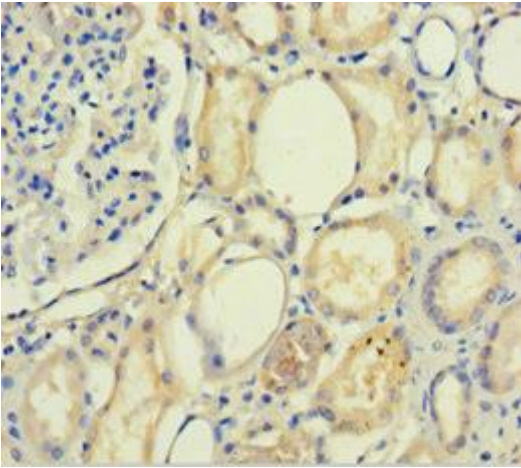
Immunogen:

Recombinant Human Secretory phospholipase A2 receptor protein (395-530AA).

Storage:

Preservative: 0.03% Proclin 300. Constituents: 50% Glycerol, 0.01M PBS, PH 7.4

Product Images



Immunohistochemistry of paraffin-embedded human kidney tissue using PACO35746 at dilution of 1:100.