

# RTL8B Antibody



PACO35666

---

## Product Information

**Size:**

50ug

**Reactivity:**

Human

**Source:**

Rabbit

**Isotype:**

IgG

**Applications:**

ELISA, IHC

**Recommended dilutions:**

ELISA:1:2000-1:10000, IHC:1:20-1:200

**Protein Background:**

**Gene ID:**

RTL8B

**Uniprot**

Q17RB0

**Synonyms:**

Retrotransposon Gag-like protein 8B (Mammalian retrotransposon derived protein 8B), RTL8B, CXX1C FAM127C MAR8B

**Immunogen:**

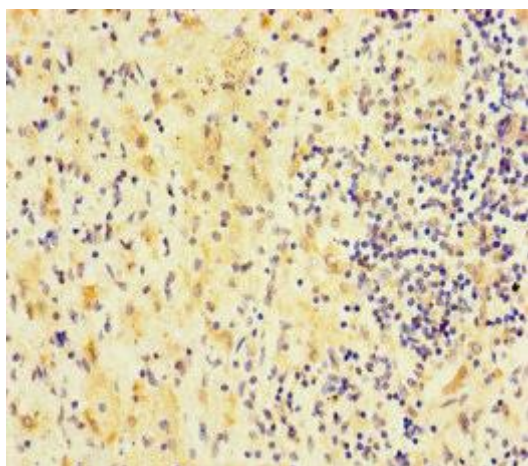
Recombinant Human Retrotransposon Gag-like protein 8B protein (1-113AA).

**Storage:**

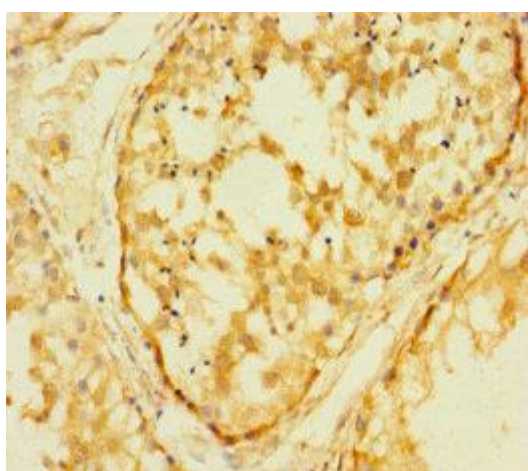
Preservative: 0.03% Proclin 300. Constituents: 50% Glycerol, 0.01M PBS, PH 7.4

## Product Images

---



Immunohistochemistry of paraffin-embedded human lung cancer using PACO35666 at dilution of 1:100.



Immunohistochemistry of paraffin-embedded human testis tissue using PACO35666 at dilution of 1:100.