

# TUBA3C Antibody



PACO35634

---

## Product Information

**Size:**

50ug

**Reactivity:**

Human, Mouse

**Source:**

Rabbit

**Isotype:**

IgG

**Applications:**

ELISA, WB, IHC, IF

**Recommended dilutions:**

ELISA:1:2000-1:10000, WB:1:1000-1:5000,  
IHC:1:20-1:200, IF:1:50-1:200

**Protein Background:**

Tubulin is the major constituent of microtubules. It binds two moles of GTP, one at an exchangeable site on the beta chain and one at a non-exchangeable site on the alpha chain.

**Gene ID:**

TUBA3C

**Uniprot**

Q13748

**Synonyms:**

Tubulin alpha-3C/D chain (Alpha-tubulin 2) (Alpha-tubulin 3C/D) (Tubulin alpha-2 chain) [Cleaved into: Detyrosinated tubulin alpha-3C/D chain], TUBA3C; TUBA3D, TUBA2;

**Immunogen:**

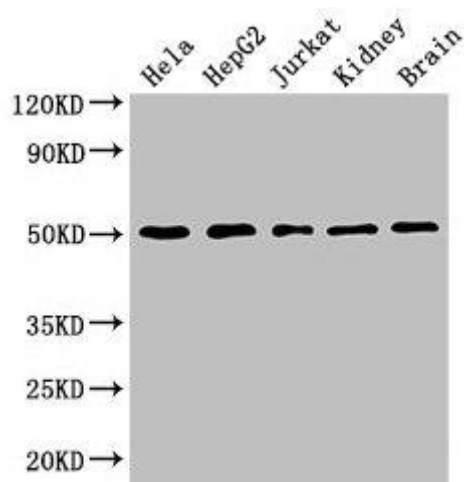
Recombinant Human Tubulin alpha-3C/D chain protein (161-418AA).

**Storage:**

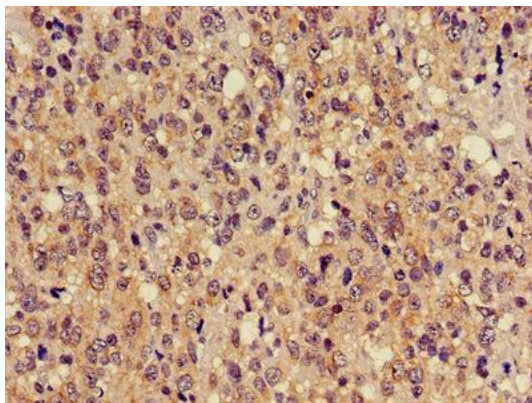
Preservative: 0.03% Proclin 300. Constituents: 50% Glycerol, 0.01M PBS, PH 7.4

## Product Images

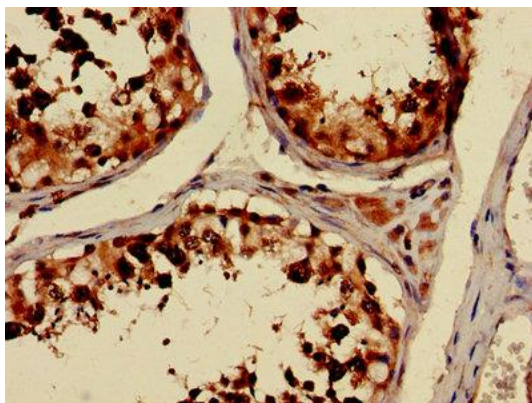
---



Western Blot. Positive WB detected in: HeLa whole cell lysate, HepG2 whole cell lysate, Jurkat whole cell lysate, Mouse kidney tissue, Mouse brain tissue. All lanes: TUBA3C antibody at 3 $\mu$ g/ml. Secondary. Goat polyclonal to rabbit IgG at 1/50000 dilution. Predicted band size: 50, 47 kDa. Observed band size: 50 kDa.



Immunohistochemistry of paraffin-embedded human glioma using PACO35634 at dilution of 1:100.



Immunohistochemistry of paraffin-embedded human testis tissue using PACO35634 at dilution of 1:100.