

KRT72 Antibody



PACO35590

Product Information

Size:

50ug

Reactivity:

Human

Source:

Rabbit

Isotype:

IgG

Applications:

ELISA, WB

Recommended dilutions:

ELISA:1:2000-1:10000, WB:1:1000-1:5000

Protein Background:

Has a role in hair formation. Specific component of keratin intermediate filaments in the inner root sheath (IRS) of the hair follicle (Probable).

Gene ID:

KRT72

Uniprot

Q14CN4

Synonyms:

Keratin, type II cytoskeletal 72 (Cytokeratin-72) (CK-72) (Keratin-72) (K72) (Type II inner root sheath-specific keratin-K6irs2) (Type-II keratin Kb35), KRT72, K6IRS2 KB35 KRT6 KRT6IRS2

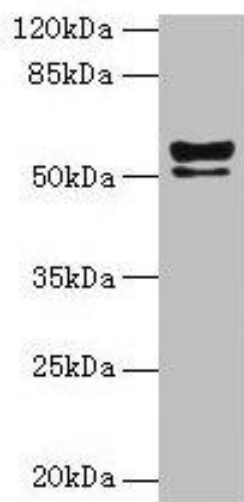
Immunogen:

Recombinant Human Keratin, type II cytoskeletal 72 protein (301-511AA).

Storage:

Preservative: 0.03% Proclin 300. Constituents: 50% Glycerol, 0.01M PBS, PH 7.4

Product Images



Western blot. All lanes: KRT72 antibody at 2 μ g/ml + MCF-7 whole cell lysate. Secondary. Goat polyclonal to rabbit IgG at 1/10000 dilution. Predicted band size: 56, 52 kDa. Observed band size: 56, 52 kDa.