

PACO35582

---

## Product Information

**Size:**

50ug

**Reactivity:**

Human

**Source:**

Rabbit

**Isotype:**

IgG

**Applications:**

ELISA, WB, IHC

**Recommended dilutions:**

ELISA:1:2000-1:10000, WB:1:1000-1:5000,  
IHC:1:20-1:200

**Protein Background:**

Copper metallochaperone essential for the assembly of the mitochondrial respiratory chain complex IV (CIV), also known as cytochrome c oxidase. Binds two copper ions and delivers them to the metallochaperone SCO1 which transports the copper ions to the Cu(A) site on the cytochrome c oxidase subunit II (MT-CO2/COX2).

**Gene ID:**

COX17

**Uniprot**

Q14061

**Synonyms:**

Cytochrome c oxidase copper chaperone, COX17

**Immunogen:**

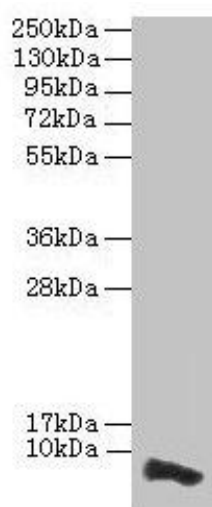
Recombinant Human Cytochrome c oxidase copper chaperone protein (1-63AA).

**Storage:**

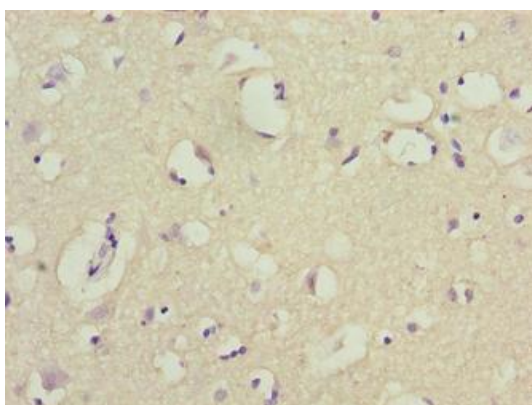
Preservative: 0.03% Proclin 300. Constituents: 50% Glycerol, 0.01M PBS, PH 7.4

## Product Images

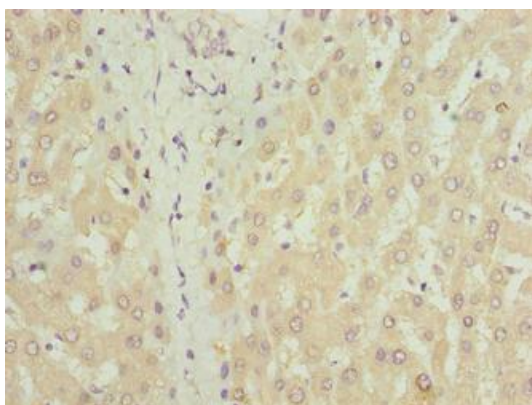
---



Western blot. All lanes: COX17 antibody at 3.5 $\mu$ g/ml + HepG2 whole cell lysate. Secondary. Goat polyclonal to rabbit IgG at 1/10000 dilution. Predicted band size: 7 kDa. Observed band size: 7 kDa.



Immunohistochemistry of paraffin-embedded human brain tissue using PACO35582 at dilution of 1:100.



Immunohistochemistry of paraffin-embedded human liver tissue using PACO35582 at dilution of 1:100.