

MPPED2 Antibody



PACO35534

Product Information

Size:

50ug

Reactivity:

Human, Mouse

Source:

Rabbit

Isotype:

IgG

Applications:

ELISA, WB

Recommended dilutions:

ELISA:1:2000-1:10000, WB:1:500-1:2000

Protein Background:

Displays low metallophosphoesterase activity (in vitro). May play a role in the development of the nervous system.

Gene ID:

MPPED2

Uniprot

Q15777

Synonyms:

Metallophosphoesterase MPPED2 (EC 3.1. -. -) (Fetal brain protein 239) (239FB) (Metallophosphoesterase domain-containing protein 2), MPPED2, C11orf8 FAM1B

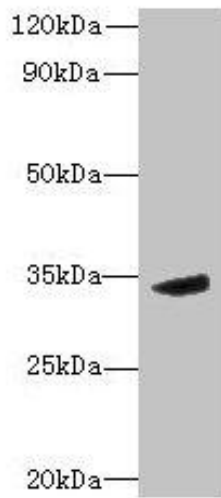
Immunogen:

Recombinant Human Metallophosphoesterase MPPED2 protein (1-294AA).

Storage:

Preservative: 0.03% Proclin 300. Constituents: 50% Glycerol, 0.01M PBS, PH 7.4

Product Images



Western blot. All lanes: MPPED2 antibody at 6 μ g/ml + Mouse brain tissue. Secondary. Goat polyclonal to rabbit IgG at 1/10000 dilution. Predicted band size: 34, 32 kDa. Observed band size: 34 kDa.