

# RHOH Antibody



PACO35526

---

## Product Information

**Size:**

50ug

**Reactivity:**

Human

**Source:**

Rabbit

**Isotype:**

IgG

**Applications:**

ELISA, IHC, IF

**Recommended dilutions:**

ELISA:1:2000-1:10000, IHC:1:20-1:200,  
IF:1:50-1:200

**Protein Background:**

**Gene ID:**

RHOH

**Uniprot**

Q15669

**Synonyms:**

Rho-related GTP-binding protein RhoH (GTP-binding protein TTF) (Translocation three four protein), RHOH, ARHH TTF

**Immunogen:**

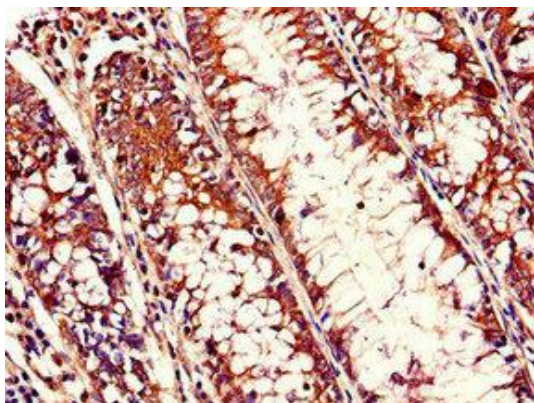
Recombinant Human Rho-related GTP-binding protein RhoH protein (1-188AA).

**Storage:**

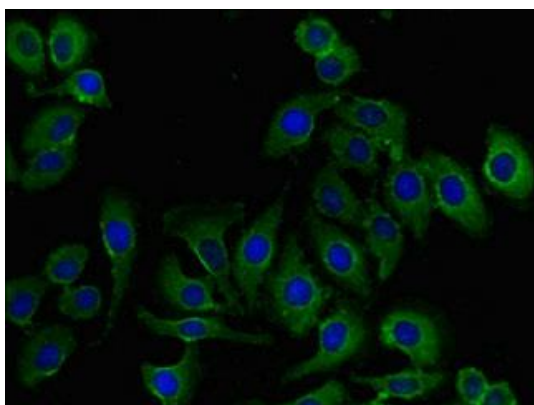
Preservative: 0.03% Proclin 300. Constituents: 50% Glycerol, 0.01M PBS, PH 7.4

## Product Images

---



Immunohistochemistry of paraffin-embedded human colon cancer using PACO35526 at dilution of 1:100.



Immunofluorescent analysis of A549 cells using PACO35526 at dilution of 1:100 and Alexa Fluor 488-conjugated AffiniPure Goat Anti-Rabbit IgG(H+L).