

PACO35486

Product Information

Size:

50ug

Reactivity:

Human

Source:

Rabbit

Isotype:

IgG

Applications:

ELISA, WB, IF

Recommended dilutions:

ELISA:1:2000-1:10000, WB:1:1000-1:5000,
IF:1:50-1:200

Protein Background:

Sequence-specific RNA-binding protein that binds to the cytoplasmic polyadenylation element (CPE), an uridine-rich sequence element (consensus sequence 5'-UUUUUUAU-3') within the mRNA 3'-UTR. RNA binding results in a clear conformational change analogous to the Venus fly trap mechanism. Regulates activation of unfolded protein response (UPR) in the process of adaptation to ER stress in liver, by maintaining translation of CPE-regulated mRNAs in conditions in which global protein synthesis is inhibited. Required for cell cycle progression, specifically for cytokinesis and chromosomal segregation. Plays a role as an oncogene promoting tumor growth and progression by positively regulating translation of t-plasminogen activator/PLAT. Stimulates proliferation of melanocytes. In contrast to CPEB1 and CPEB3, does not play role in synaptic plasticity, learning and memory.

Gene ID:

CPEB4

Uniprot

Q17RY0

Synonyms:

Cytoplasmic polyadenylation element-binding protein 4 (CPE-BP4) (CPE-binding protein 4) (hCPEB-4), CPEB4, KIAA1673

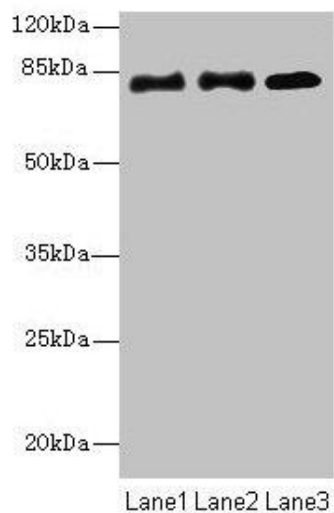
Immunogen:

Recombinant Human Cytoplasmic polyadenylation element-binding protein 4 protein (244-515AA).

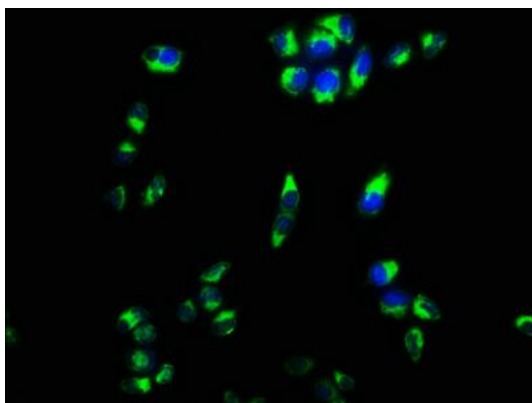
Storage:

Preservative: 0.03% Proclin 300. Constituents: 50% Glycerol, 0.01M PBS, PH 7.4

Product Images



Western blot. All lanes: CPEB4 antibody at 2 μ g/ml. Lane 1: HeLa whole cell lysate. Lane 2: 293T whole cell lysate. Lane 3: U87 whole cell lysate. Secondary: Goat polyclonal to rabbit IgG at 1/10000 dilution. Predicted band size: 81, 79, 37 kDa. Observed band size: 81 kDa.



Immunofluorescence staining of HeLa cells with PACO35486 at 1:133, counter-stained with DAPI. The cells were fixed in 4% formaldehyde, permeabilized using 0.2% Triton X-100 and blocked in 10% normal Goat Serum. The cells were then incubated with the antibody overnight at 4°C. The secondary antibody was Alexa Fluor 488-conjugated AffiniPure Goat Anti-Rabbit IgG(H+L).