

PACO35458

Product Information

Size:

50ug

Reactivity:

Human

Source:

Rabbit

Isotype:

IgG

Applications:

ELISA, WB, IHC, IF

Recommended dilutions:

ELISA:1:2000-1:10000, WB:1:500-1:5000,
IHC:1:20-1:200, IF:1:50-1:200

Protein Background:

Component of the microsomal signal peptidase complex which removes signal peptides from nascent proteins as they are translocated into the lumen of the endoplasmic reticulum.

Gene ID:

SPCS2

Uniprot

Q15005

Synonyms:

Signal peptidase complex subunit 2 (EC 3.4. -. -) (Microsomal signal peptidase 25 kDa subunit) (SPase 25 kDa subunit), SPCS2, KIAA0102 SPC25

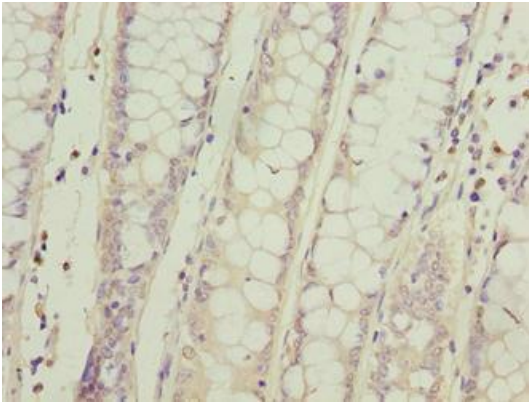
Immunogen:

Recombinant Human Signal peptidase complex subunit 2 protein (7-86AA).

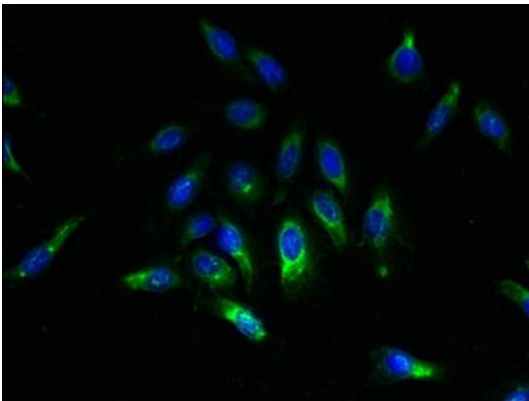
Storage:

Preservative: 0.03% Proclin 300. Constituents: 50% Glycerol, 0.01M PBS, PH 7.4

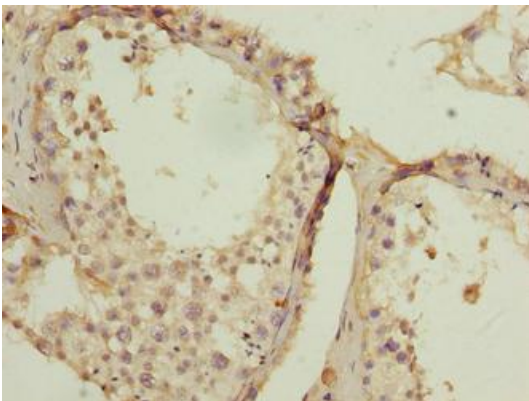
Product Images



Immunohistochemistry of paraffin-embedded human colon cancer using PACO35458 at dilution of 1:100.



Immunofluorescent analysis of HeLa cells using PACO35458 at dilution of 1:100 and Alexa Fluor 488-conjugated AffiniPure Goat Anti-Rabbit IgG(H+L).



Immunohistochemistry of paraffin-embedded human testis tissue using PACO35458 at dilution of 1:100.