

PACO35422

Product Information

Size:

50ug

Reactivity:

Human, Rat

Source:

Rabbit

Isotype:

IgG

Applications:

ELISA, WB, IHC

Recommended dilutions:

ELISA:1:2000-1:10000, WB:1:500-1:5000,
IHC:1:20-1:200

Protein Background:

The small GTPases Rab are key regulators of intracellular membrane trafficking, from the formation of transport vesicles to their fusion with membranes. Rabs cycle between an inactive GDP-bound form and an active GTP-bound form that is able to recruit to membranes different set of downstream effectors directly responsible for vesicle formation, movement, tethering and fusion. That Rab plays a role in endocytic recycling, regulating apical recycling of several transmembrane proteins including cystic fibrosis transmembrane conductance regulator/CFTR, epithelial sodium channel/ENaC, potassium voltage-gated channel, and voltage-dependent L-type calcium channel. May also regulate constitutive and regulated secretion, like insulin granule exocytosis. Required for melanosome transport and release from melanocytes. Also regulates V-ATPase intracellular transport in response to extracellular acid, sis.

Gene ID:

RAB11B

Uniprot

Q15907

Synonyms:

Ras-related protein Rab-11B (GTP-binding protein YPT3), RAB11B, YPT3

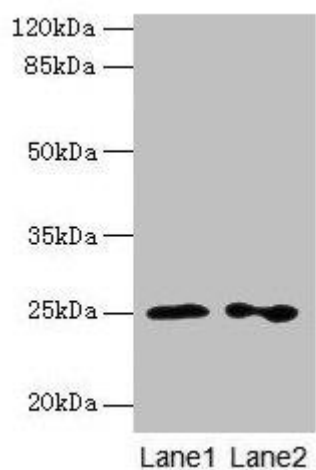
Immunogen:

Recombinant Human Ras-related protein Rab-11B protein (2-215AA).

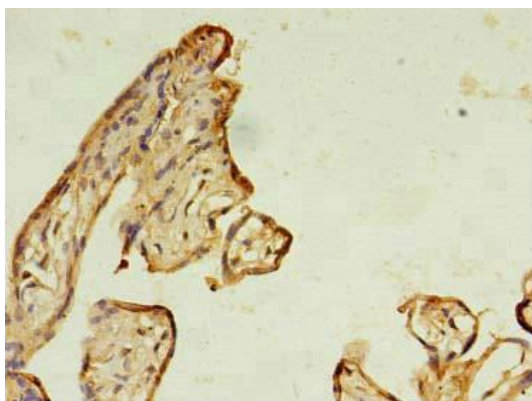
Storage:

Preservative: 0.03% Proclin 300. Constituents: 50% Glycerol, 0.01M PBS, PH 7.4

Product Images



Western blot. All lanes: RAB11B antibody at 2 μ g/ml. Lane 1: HeLa whole cell lysate. Lane 2: Rat gonadal tissue. Secondary. Goat polyclonal to rabbit IgG at 1/10000 dilution. Predicted band size: 25, 20 kDa. Observed band size: 25 kDa.



Immunohistochemistry of paraffin-embedded human placenta tissue using PACO35422 at dilution of 1:100.