

RBMS2 Antibody



PACO35322

Product Information

Size:

50ug

Reactivity:

Human

Source:

Rabbit

Isotype:

IgG

Applications:

ELISA, WB, IHC

Recommended dilutions:

ELISA:1:2000-1:10000, WB:1:500-1:2000,
IHC:1:20-1:200

Protein Background:

Gene ID:

RBMS2

Uniprot

Q15434

Synonyms:

RNA-binding motif, single-stranded-interacting protein 2 (Suppressor of CDC2 with RNA-binding motif 3), RBMS2, SCR3

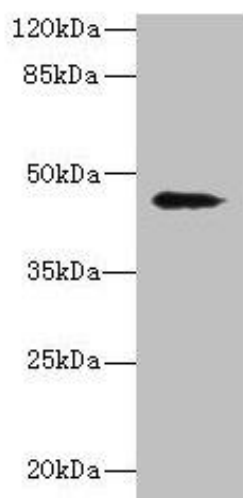
Immunogen:

Recombinant Human RNA-binding motif, single-stranded-interacting protein 2 protein (1-407AA).

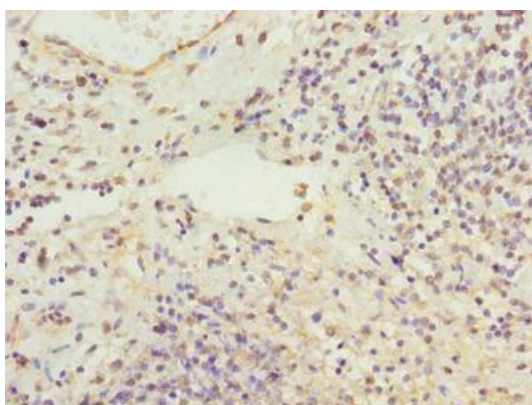
Storage:

Preservative: 0.03% Proclin 300. Constituents: 50% Glycerol, 0.01M PBS, PH 7.4

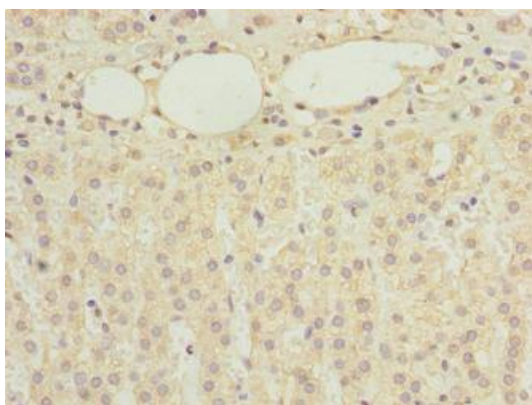
Product Images



Western blot. All lanes: RBMS2 antibody at 0.5 μ g/ml + MCF-7 whole cell lysate. Secondary. Goat polyclonal to rabbit IgG at 1/10000 dilution. Predicted band size: 44 kDa. Observed band size: 44 kDa.



Immunohistochemistry of paraffin-embedded human cervical cancer using PACO35322 at dilution of 1:100.



Immunohistochemistry of paraffin-embedded human adrenal gland tissue using PACO35322 at dilution of 1:100.