

GIT2 Antibody



PACO35290

Product Information

Size:

50ug

Reactivity:

Human

Source:

Rabbit

Isotype:

IgG

Applications:

ELISA, IHC

Recommended dilutions:

ELISA:1:2000-1:10000, IHC:1:20-1:200

Protein Background:

GTPase-activating protein for the ADP ribosylation factor family.

Gene ID:

GIT2

Uniprot

Q14161

Synonyms:

ARF GTPase-activating protein GIT2 (ARF GAP GIT2) (Cool-interacting tyrosine-phosphorylated protein 2) (CAT-2) (CAT2) (G protein-coupled receptor kinase-interactor 2) (GRK-interacting protein 2), GIT2, KIAA0148

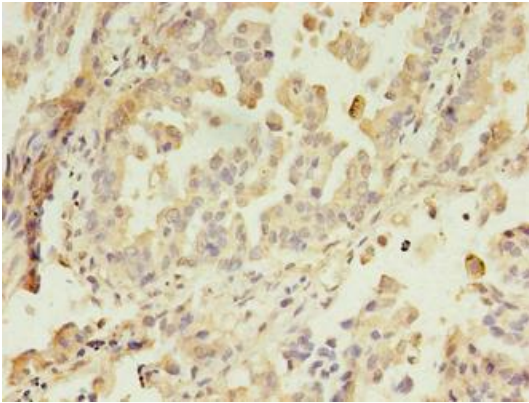
Immunogen:

Recombinant Human ARF GTPase-activating protein GIT2 protein (1-603AA).

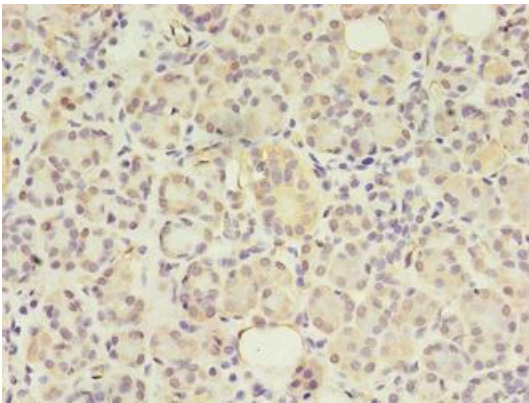
Storage:

Preservative: 0.03% Proclin 300. Constituents: 50% Glycerol, 0.01M PBS, PH 7.4

Product Images



Immunohistochemistry of paraffin-embedded human lung cancer using PACO35290 at dilution of 1:100.



Immunohistochemistry of paraffin-embedded human pancreatic tissue using PACO35290 at dilution of 1:100.