

MRPL49 Antibody



PACO35278

Product Information

Size:

50ug

Reactivity:

Human, Mouse

Source:

Rabbit

Isotype:

IgG

Applications:

ELISA, WB, IHC

Recommended dilutions:

ELISA:1:2000-1:10000, WB:1:1000-1:5000,
IHC:1:20-1:200

Protein Background:**Gene ID:**

MRPL49

Uniprot

Q13405

Synonyms:

39S ribosomal protein L49, mitochondrial (L49mt) (MRP-L49) (Mitochondrial large ribosomal subunit protein mL49) (Neighbor of FAU) (NOF) (Protein NOF1), MRPL49, C11orf4 NOF1

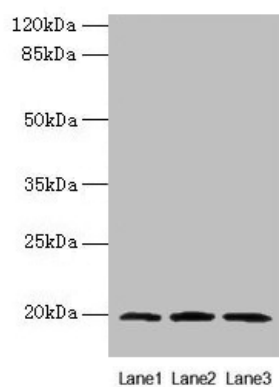
Immunogen:

Recombinant Human 39S ribosomal protein L49, mitochondrial protein (1-166AA).

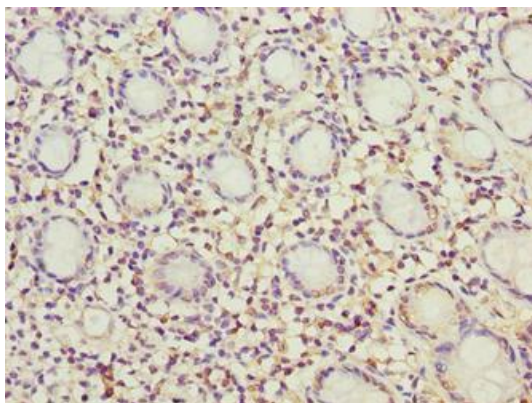
Storage:

Preservative: 0.03% Proclin 300. Constituents: 50% Glycerol, 0.01M PBS, PH 7.4

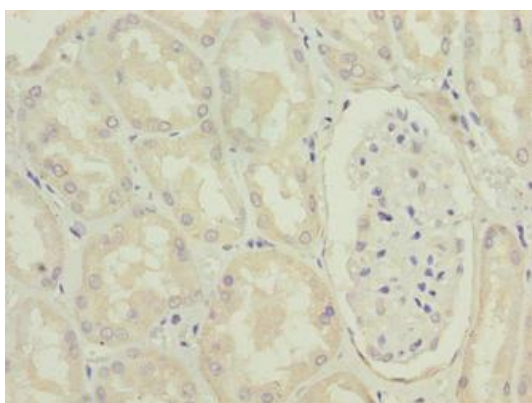
Product Images



Western blot. All lanes: MRPL49 antibody at 0.6 μ g/ml. Lane 1: Colo320 whole cell lysate. Lane 2: Mouse liver tissue. Lane 3: Mouse kidney tissue. Secondary. Goat polyclonal to rabbit IgG at 1/10000 dilution. Predicted band size: 20 kDa. Observed band size: 20 kDa.



Immunohistochemistry of paraffin-embedded human colon tissue using PACO35278 at dilution of 1:100.



Immunohistochemistry of paraffin-embedded human kidney tissue using PACO35278 at dilution of 1:100.