

INCA1 Antibody



PACO35230

Product Information

Size:

50ug

Reactivity:

Human

Source:

Rabbit

Isotype:

IgG

Applications:

ELISA, IHC

Recommended dilutions:

ELISA:1:2000-1:10000, IHC:1:20-1:200

Protein Background:

Binds to CDK2-bound cyclins and inhibits the kinase activity of CDK2; binding to cyclins is critical for its function as CDK inhibitor. Inhibits cell growth and cell proliferation and may play a role in cell cycle control. Required for ING5-mediated regulation of S-phase progression, enhancement of Fas-induced apoptosis and inhibition of cell growth.

Gene ID:

INCA1

Uniprot

Q0VD86

Synonyms:

Protein INCA1 (Inhibitor of CDK interacting with cyclin A1), INCA1

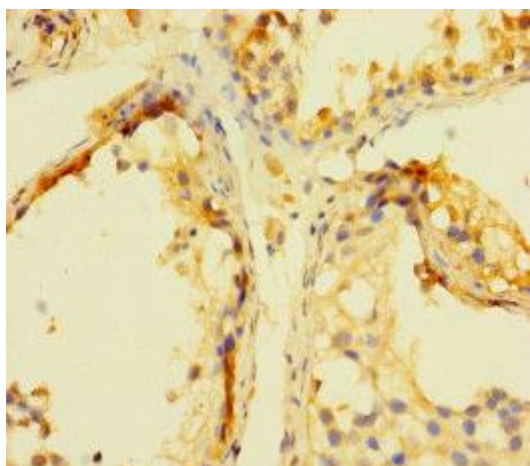
Immunogen:

Recombinant Human Protein INCA1 protein (1-236AA).

Storage:

Preservative: 0.03% Proclin 300. Constituents: 50% Glycerol, 0.01M PBS, PH 7.4

Product Images



Immunohistochemistry of paraffin-embedded human testis tissue using PACO35230 at dilution of 1:100.