

Product Information

Size:

50ug

Reactivity:

Escherichia coli

Source:

Rabbit

Isotype:

IgG

Applications:

ELISA, WB

Recommended dilutions:

ELISA:1:2000-1:10000, WB:1:1000-1:5000

Protein Background:

Involved in the synthesis of autoinducer 2 (AI-2) which is secreted by bacteria and is used to communicate both the cell density and the metabolic potential of the environment. The regulation of gene expression in response to changes in cell density is called quorum sensing. Catalyzes the transformation of S-ribosylhomocysteine (RHC) to homocysteine (HC) and 4,5-dihydroxy-2,3-pentadione (DPD).

Gene ID:

luxS

Uniprot

P45578

Synonyms:

S-ribosylhomocysteine lyase (EC 4.4.1.21) (AI-2 synthesis protein) (Autoinducer-2 production protein LuxS), luxS, ygaG

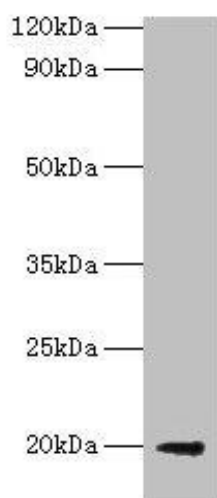
Immunogen:

Recombinant Escherichia coli S-ribosylhomocysteine lyase protein (2-171AA).

Storage:

Preservative: 0.03% Proclin 300. Constituents: 50% Glycerol, 0.01M PBS, PH 7.4

Product Images



Western blot. All lanes: luxS antibody at 2 μ g/ml + DH5a whole cell lysate. Secondary. Goat polyclonal to rabbit IgG at 1/10000 dilution. Predicted band size: 20 kDa. Observed band size: 20 kDa.