

# SCRG1 Antibody



PACO35186

---

## Product Information

**Size:**

50ug

**Reactivity:**

Human

**Source:**

Rabbit

**Isotype:**

IgG

**Applications:**

ELISA, IHC

**Recommended dilutions:**

ELISA:1:2000-1:10000, IHC:1:20-1:200

**Protein Background:****Gene ID:**

SCRG1

**Uniprot**

O75711

**Synonyms:**

Scrapie-responsive protein 1 (Scrapie-responsive gene 1 protein) (ScRG-1), SCRG1

**Immunogen:**

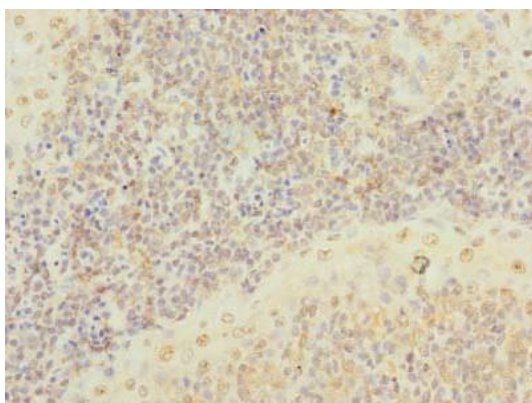
Recombinant Human Scrapie-responsive protein 1 protein (21-98AA).

**Storage:**

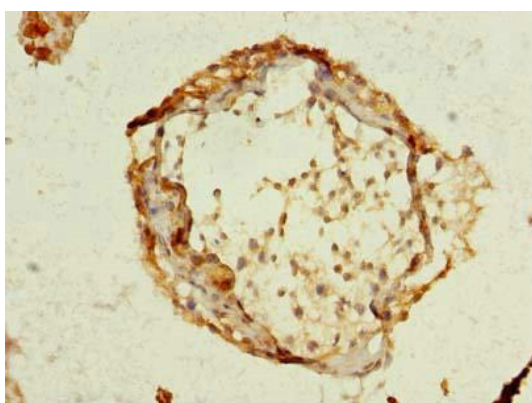
Preservative: 0.03% Proclin 300. Constituents: 50% Glycerol, 0.01M PBS, PH 7.4

## Product Images

---



Immunohistochemistry of paraffin-embedded human tonsil tissue using PACO35186 at dilution of 1:100.



Immunohistochemistry of paraffin-embedded human testis tissue using PACO35186 at dilution of 1:100.