

# PR10A Antibody



PACO34986

---

## Product Information

**Size:**

50ug

**Reactivity:**

Coptis japonica

**Source:**

Rabbit

**Isotype:**

IgG

**Applications:**

ELISA, WB

**Recommended dilutions:**

ELISA:1:2000-1:10000, WB:1:1000-1:5000

**Protein Background:**

Involved in the biosynthesis of the common precursor of all benzyloquinoline alkaloids such as morphine, sanguinarine, codeine or berberine. Condenses dopamine and pyruvic acid, or 4-hydroxyphenylpyruvate.

**Gene ID:**

PR10A

**Uniprot**

A2A1A1

**Synonyms:**

S-norococlaurine synthase 2 (EC 4.2.1.78) (Pathogenesis related protein 10A) (CjPR10A), PR10A

**Immunogen:**

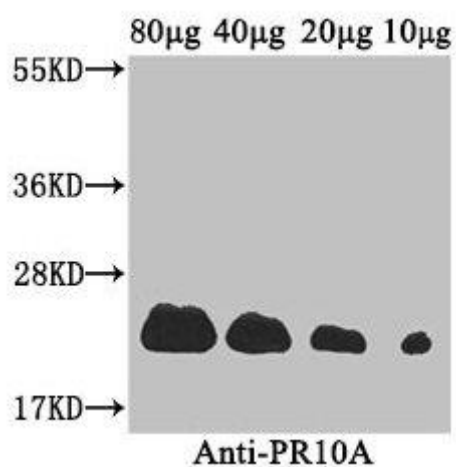
Recombinant Coptis japonica S-norococlaurine synthase 2 protein (20-196AA).

**Storage:**

Preservative: 0.03% Proclin 300. Constituents: 50% Glycerol, 0.01M PBS, PH 7.4

## Product Images

---



Western Blot. Positive WB detected in: *Coptis japonica* (80µg, 40µg, 20µg, 10µg). All lanes: PR10A antibody at 3.4µg/ml. Secondary. Goat polyclonal to rabbit IgG at 1/50000 dilution. Predicted band size: 23 kDa. Observed band size: 23 kDa.