

PACO34790

Product Information

Size:

50ug

Reactivity:

Escherichia coli

Source:

Rabbit

Isotype:

IgG

Applications:

ELISA, WB

Recommended dilutions:

ELISA:1:2000-1:10000, WB:1:1000-1:5000

Protein Background:

Chaperone involved in the correct folding and assembly of outer membrane proteins, such as OmpA, OmpF and LamB. Recognizes specific patterns of aromatic residues and the orientation of their side chains, which are found more frequently in integral outer membrane proteins. May act in both early periplasmic and late outer membrane-associated steps of protein maturation. Essential for the survival of E.coli in stationary phase. Required for pilus biogenesis.

Gene ID:

surA

Uniprot

P0ABZ6

Synonyms:

Chaperone SurA (Peptidyl-prolyl cis-trans isomerase SurA) (PPIase SurA) (EC 5.2.1.8) (Rotamase SurA) (Survival protein A), surA

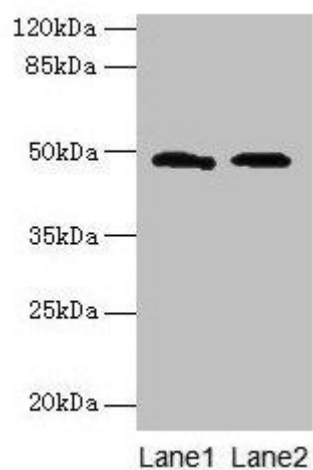
Immunogen:

Recombinant Escherichia coli Chaperone SurA protein (21-428AA).

Storage:

Preservative: 0.03% Proclin 300. Constituents: 50% Glycerol, 0.01M PBS, PH 7.4

Product Images



Western blot. All lanes: surA antibody at 12 μ g/ml. Lane 1: 293T whole cell lysate. Lane 2: DH5alpha whole cell lysate. Secondary. Goat polyclonal to rabbit IgG at 1/10000 dilution. Predicted band size: 48 kDa. Observed band size: 48 kDa.