

PACO34674

---

## Product Information

**Size:**

50ug

**Reactivity:**

Bordetella pertussis

**Source:**

Rabbit

**Isotype:**

IgG

**Applications:**

ELISA, WB

**Recommended dilutions:**

ELISA:1:2000-1:10000, WB:1:1000-1:5000

**Protein Background:**

S1 is an NAD-dependent ADP-ribosyltransferase, which plays a crucial role in the pathogenesis of B. pertussis causing disruption of normal host cellular regulation. It catalyzes the ADP-ribosylation of a cysteine in the alpha subunit of host heterotrimeric G proteins. In the absence of G proteins it also catalyzes the cleavage of NAD<sup>+</sup> into ADP-ribose and nicotinamide. It irreversibly uncouples the G-alpha GTP-binding proteins from their membrane receptors.

**Gene ID:**

ptxA

**Uniprot**

P04977

**Synonyms:**

Pertussis toxin subunit 1 (PTX S1) (Islet-activating protein S1) (IAP S1) (NAD-dependent ADP-ribosyltransferase) (EC 2.4.2. -), ptxA

**Immunogen:**

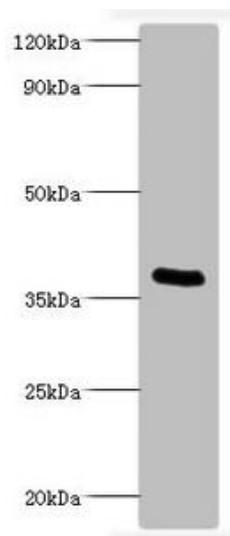
Recombinant Bordetella pertussis Pertussis toxin subunit 1 protein (35-269AA).

**Storage:**

Preservative: 0.03% Proclin 300. Constituents: 50% Glycerol, 0.01M PBS, PH 7.4

## Product Images

---



Western blot. All lanes: Bordella pertussis pertussis toxin subunit 1 antibody at 2µg/ml + recombinant Bordella pertussis pertussis toxin subunit 1 100ng. Secondary. Goat polyclonal to rabbit IgG at 1/1000 dilution. Predicted band size: 36 kDa. Observed band size: 36 kDa.