

MAP3K7CL Antibody



PACO34582

Product Information

Size:

50ug

Reactivity:

Human

Source:

Rabbit

Isotype:

IgG

Applications:

ELISA, IHC, IF

Recommended dilutions:

ELISA:1:2000-1:10000, IHC:1:20-1:200,
IF:1:50-1:200

Protein Background:

Gene ID:

MAP3K7CL

Uniprot

P57077

Synonyms:

MAP3K7 C-terminal-like protein (TAK1-like protein), MAP3K7CL, C21orf7 TAK1L

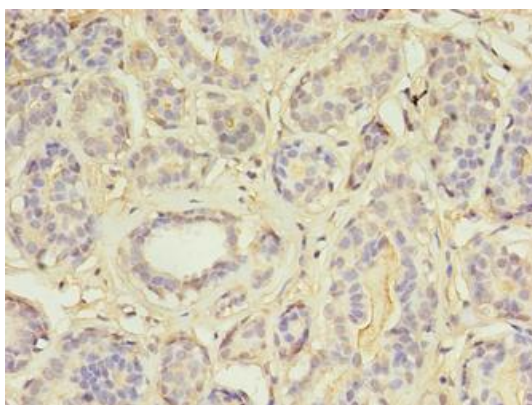
Immunogen:

Recombinant Human MAP3K7 C-terminal-like protein (1-142AA).

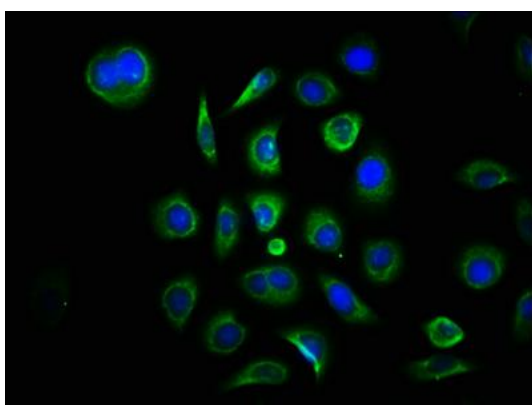
Storage:

Preservative: 0.03% Proclin 300. Constituents: 50% Glycerol, 0.01M PBS, PH 7.4

Product Images



Immunohistochemistry of paraffin-embedded human breast cancer using PACO34582 at dilution of 1:100.



Immunofluorescence staining of A549 cells with PACO34582 at 1:133, counter-stained with DAPI. The cells were fixed in 4% formaldehyde, permeabilized using 0.2% Triton X-100 and blocked in 10% normal Goat Serum. The cells were then incubated with the antibody overnight at 4°C. The secondary antibody was Alexa Fluor 488-conjugated AffiniPure Goat Anti-Rabbit IgG(H+L).