

CTRB1 Antibody



PACO34302

Product Information

Size:

50ug

Reactivity:

Human, Mouse

Source:

Rabbit

Isotype:

IgG

Applications:

ELISA, WB, IHC

Recommended dilutions:

ELISA:1:2000-1:10000, WB:1:500-1:5000,
IHC:1:20-1:200

Protein Background:

Gene ID:

CTRB1

Uniprot

P17538

Synonyms:

Chymotrypsinogen B (EC 3.4.21.1) [Cleaved into: Chymotrypsin B chain A; Chymotrypsin B chain B; Chymotrypsin B chain C], CTRB1, CTRB

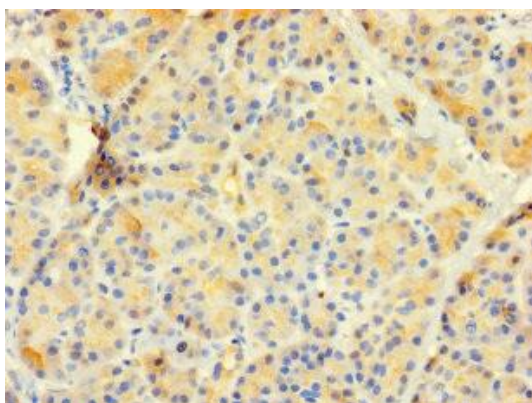
Immunogen:

Recombinant Human Chymotrypsinogen B protein (19-263AA).

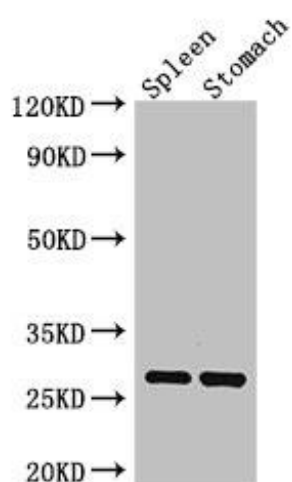
Storage:

Preservative: 0.03% Proclin 300. Constituents: 50% Glycerol, 0.01M PBS, PH 7.4

Product Images



Immunohistochemistry of paraffin-embedded human pancreatic tissue using PACO34302 at dilution of 1:100.



Western Blot. Positive WB detected in: Mouse spleen tissue, Mouse stomach tissue. All lanes: CTRB1 antibody at 3 μ g/ml. Secondary. Goat polyclonal to rabbit IgG at 1/50000 dilution. Predicted band size: 28 kDa. Observed band size: 28 kDa.