

PACO33940

Product Information

Size:

50ug

Reactivity:

Escherichia coli

Source:

Rabbit

Isotype:

IgG

Applications:

ELISA, WB

Recommended dilutions:

ELISA:1:2000-1:10000, WB:1:500-1:5000

Protein Background:

Key enzyme in the regulation of glycerol uptake and metabolism.

Gene ID:

glpK

Uniprot

P0A6F3

Synonyms:

Glycerol kinase (EC 2.7.1.30) (ATP: glycerol 3-phosphotransferase) (Glycerokinase) (GK), glpK

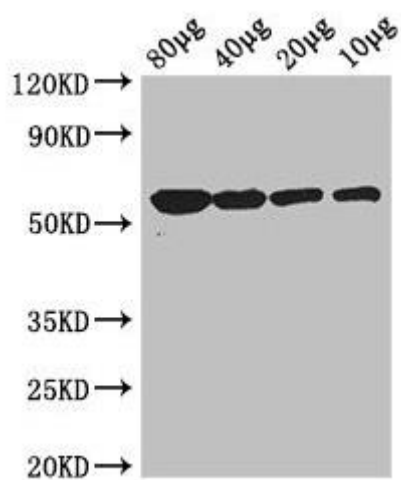
Immunogen:

Recombinant Escherichia coli Glycerol kinase protein (2-502AA).

Storage:

Preservative: 0.03% Proclin 300. Constituents: 50% Glycerol, 0.01M PBS, PH 7.4

Product Images



Western Blot

Positive WB detected in: Rosseta bacteria lysate at 80µg, 40µg, 20µg, 10µg

All lanes: glpK antibody at 3µg/ml

Secondary

Goat polyclonal to rabbit IgG at 1/50000 dilution

Predicted band size: 57 kDa

Observed band size: 57 kDa