

At2g24580 Antibody



PACO33932

Product Information

Size:

50ug

Reactivity:**Source:**

Rabbit

Isotype:

IgG

Applications:

ELISA, WB

Recommended dilutions:

ELISA:1:2000-1:10000, WB:1:1000-1:2000

Protein Background:**Gene ID:**

At2g24580

Uniprot

Q9SJA7

Synonyms:

Probable sarcosine oxidase (EC 1.5.3.1).

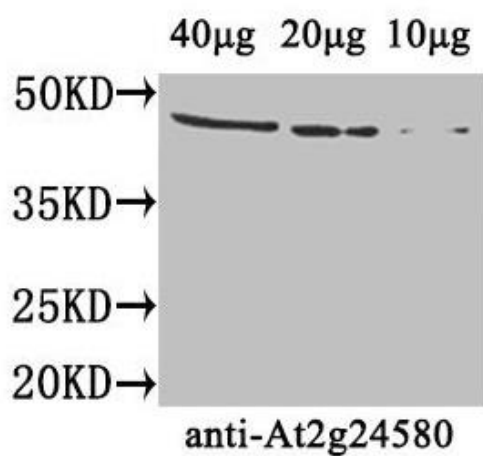
Immunogen:

Recombinant Arabidopsis thaliana Probable sarcosine oxidase protein (1-416AA).

Storage:

Preservative: 0.03% Proclin 300. Constituents: 50% Glycerol, 0.01M PBS, PH 7.4

Product Images



Western Blot. Positive WB detected in: Arabidopsis thaliana (40 µg, 20 µg, 10 µg). All lanes: At2g24580 antibody at 4 µg/ml. Secondary. Goat polyclonal to rabbit IgG at 1/50000 dilution. Predicted band size: 46 kDa. Observed band size: 46 kDa.