

# HLA-DRA Antibody



PACO33868

---

## Product Information

**Size:**

50ug

**Reactivity:**

Human

**Source:**

Rabbit

**Isotype:**

IgG

**Applications:**

ELISA, IHC

**Recommended dilutions:**

ELISA:1:2000-1:10000, IHC:1:20-1:200

**Protein Background:**

**Gene ID:**

HLA-DRA

**Uniprot**

P01903

**Synonyms:**

HLA class II histocompatibility antigen, DR alpha chain (MHC class II antigen DRA), HLA-DRA, HLA-DRA1

**Immunogen:**

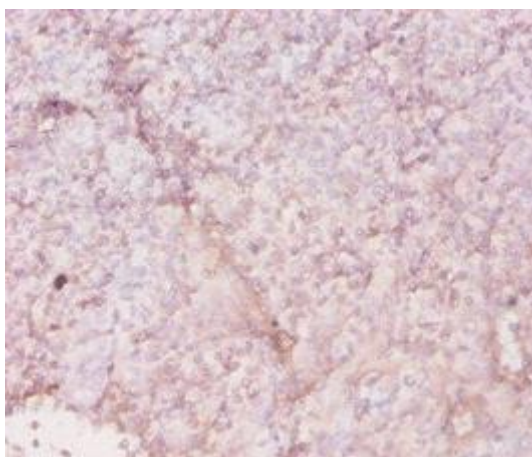
Recombinant Human HLA class II histocompatibility antigen, DR &alpha; chain protein (28-254AA).

**Storage:**

Preservative: 0.03% Proclin 300. Constituents: 50% Glycerol, 0.01M PBS, PH 7.4

## Product Images

---



Immunohistochemistry of paraffin-embedded human tonsil tissue using PACO33868 at dilution of 1:20.