

PACO33836

Product Information

Size:

50ug

Reactivity:

Human

Source:

Rabbit

Isotype:

IgG

Applications:

ELISA, IHC, IF

Recommended dilutions:

ELISA:1:2000-1:10000, IHC:1:20-1:200,
IF:1:50-1:200

Protein Background:

Mediates the endocytosis of plasma glycoproteins to which the terminal sialic acid, residue on their complex carbohydrate moieties has been removed. The receptor recognizes terminal galactose and N-acetylgalactosamine units. After ligand binding to the receptor, the resulting complex is internalized and transported to a sorting organelle, where receptor and ligand are disassociated. The receptor then returns to the cell membrane surface.

Gene ID:

ASGR1

Uniprot

P07306

Synonyms:

Asialoglycoprotein receptor 1 (ASGP-R 1) (ASGPR 1) (C-type lectin domain family 4 member H1) (Hepatic lectin H1) (HL-1), ASGR1, CLEC4H1

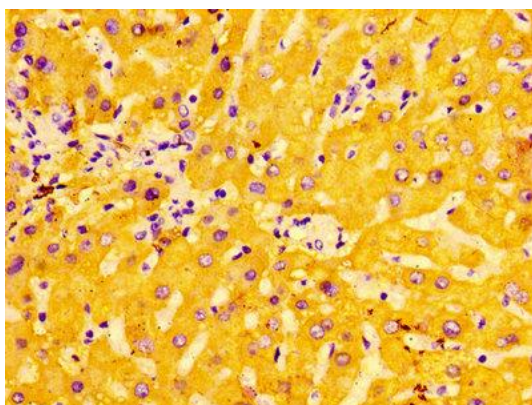
Immunogen:

Recombinant Human Asialoglycoprotein receptor 1 protein (68-291AA).

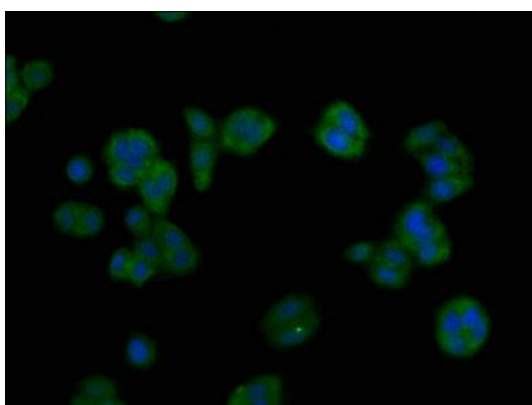
Storage:

Preservative: 0.03% Proclin 300. Constituents: 50% Glycerol, 0.01M PBS, PH 7.4

Product Images



Immunohistochemistry of paraffin-embedded human liver tissue using PACO33836 at dilution of 1:100.



Immunofluorescent analysis of HepG2 cells using PACO33836 at dilution of 1:100 and Alexa Fluor 488-conjugated AffiniPure Goat Anti-Rabbit IgG(H+L).