

# MT1A Antibody



PACO33828

---

## Product Information

**Size:**

50ug

**Reactivity:**

Human

**Source:**

Rabbit

**Isotype:**

IgG

**Applications:**

ELISA, IHC

**Recommended dilutions:**

ELISA:1:2000-1:10000, IHC:1:20-1:200

**Protein Background:**

Metallothioneins have a high content of cysteine residues that bind various heavy metals; these proteins are transcriptionally regulated by both heavy metals and glucocorticoids.

**Gene ID:**

MT1A

**Uniprot**

P04731

**Synonyms:**

Metallothionein-1A (MT-1A) (Metallothionein-IA) (MT-IA), MT1A, MT1S

**Immunogen:**

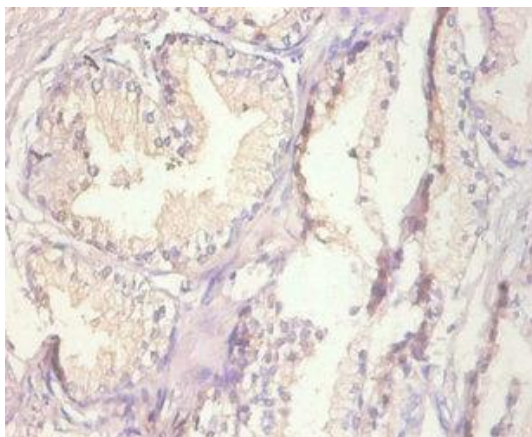
Recombinant Human Metallothionein-1A protein (1-59AA).

**Storage:**

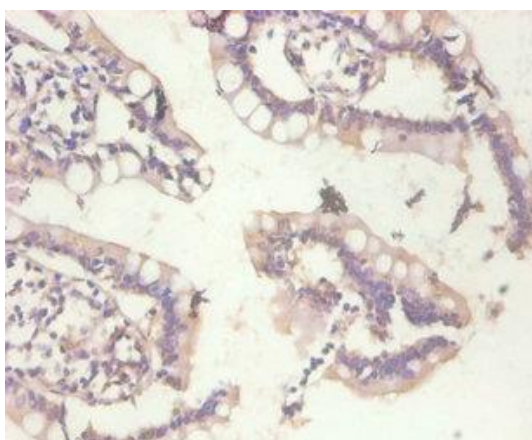
Preservative: 0.03% Proclin 300. Constituents: 50% Glycerol, 0.01M PBS, PH 7.4

## Product Images

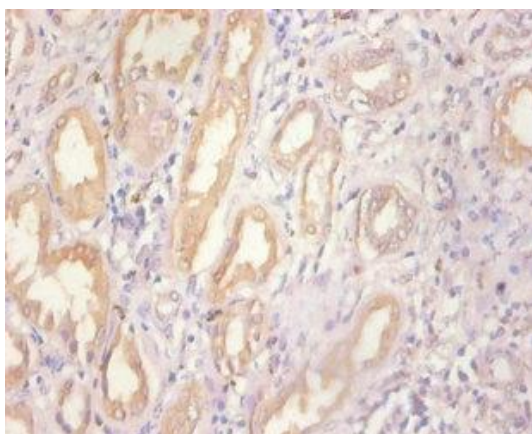
---



Immunohistochemistry of paraffin-embedded human prostate tissue using PACO33828 at dilution of 1:100.



Immunohistochemistry of paraffin-embedded human small intestine tissue using PACO33828 at dilution of 1:100.



Immunohistochemistry of paraffin-embedded human kidney tissue using PACO33828 at dilution of 1:100.