

PACO33532

---

## Product Information

**Size:**

50ug

**Reactivity:**

Rabies virus

**Source:**

Rabbit

**Isotype:**

IgG

**Applications:**

ELISA, WB

**Recommended dilutions:**

ELISA:1:2000-1:10000, WB:1:1000-1:5000

**Protein Background:**

Attaches the virus to host cellular receptor, inducing endocytosis of the virion. In the endosome, the acid, c pH induces conformational changes in the glycoprotein trimer, which trigger fusion between virus and cell membrane. There is convincing in vitro evidence that the muscular form of the nicotinic acetylcholine receptor (nAChR), the neuronal cell adhesion molecule (NCAM), and the p75 neurotrophin receptor (p75NTR) bind glycoprotein G and thereby facilitate rabies virus entry into cells.

**Gene ID:**

G

**Uniprot**

P03524

**Synonyms:**

Glycoprotein, G

**Immunogen:**

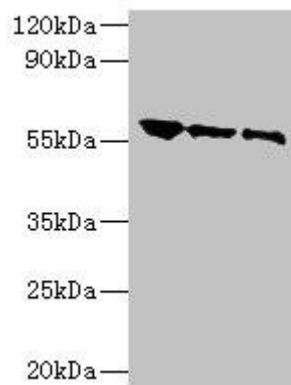
Recombinant Rabies virus Glycoprotein protein (20-459AA).

**Storage:**

Preservative: 0.03% Proclin 300. Constituents: 50% Glycerol, 0.01M PBS, PH 7.4

## Product Images

---



### Western blot

All lanes: Rabies virus Glycoprotein G antibody at 1: 500

Lane 1: Rabies virus antigen 1: 2

Lane 2: Rabies virus antigen 1: 10

Lane 3: Rabies virus antigen 1: 20

Secondary

Goat polyclonal to rabbit IgG at 1/10000 dilution

Predicted band size: 55 kDa

Observed band size: 55 kDa